

THE "BEST" LIGHT

THE HENRY FRANCIS *du* PONY
WINTERTHUR MUSEUM
LIBRARIES

5

THE "BEST" SYSTEM OF LIGHTING

THE BEST LIGHT COMPANY,

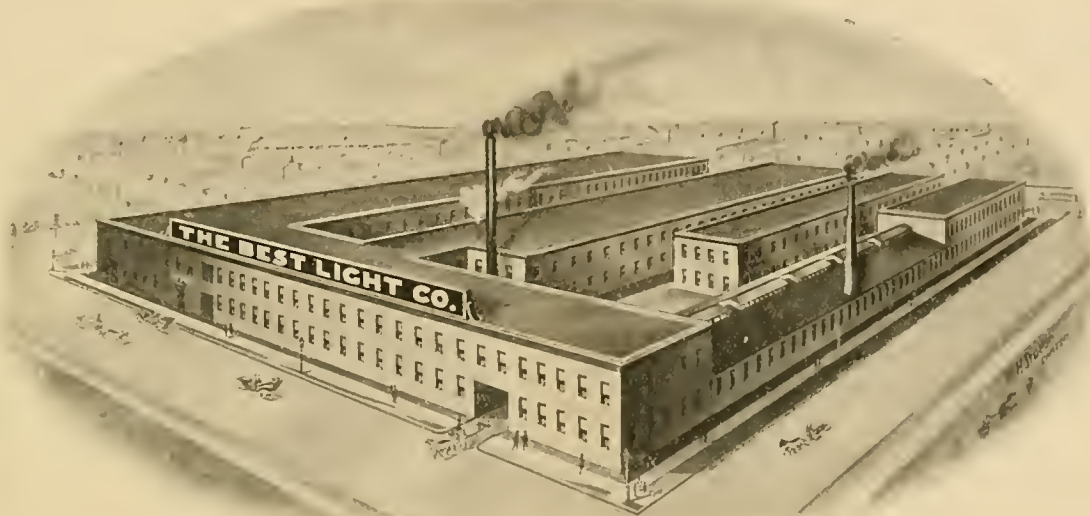
Sole Manufacturers of THE FAMOUS "BEST" VAPOR GAS LAMPS
GREATEST AND MOST BEAUTIFUL WHITE LIGHT AT LEAST COST

ALL KINDS
OF

LAMPS

For Lighting

HALLS,
CAFES,
STORES,
CHURCHES,
LODGES,
HOTELS,
OFFICES,
HOMES,
ETC., ETC.



LARGEST VAPOR GAS LAMP WORKS IN THE WORLD

ALL KINDS
OF

LAMPS

For Lighting

PARKS,
STREETS,
AVENUES,
WHARVES,
STORE
ENTRANCES,
SUMMER
RESORTS,
ETC., ETC.

Tip, Plate, Spray, and Incandescent Vapor Gas Burners and Fittings, Street Lamps for Gas, Gasoline and Kerosene
OFFICE, WORKS AND FOUNDRY, 726 to 800 East Fifth Street, CANTON, OHIO, U. S. A.

CATALOGUE No. 43

OHIO'S BUSIEST CITY

CANTON'S PROUD TITLE.

An Industrial Center that is Growing with Phenomenal Rapidity—Natural Advantages Attract Manufacturers.

By John E. Monnot,
Secretary of the Canton Board
of Trade.

In the Pittsburg Dispatch, Sunday, September 14, 1902, issue, under the above heading, in a very lengthy article, the following appears:

"Among the more important of Canton's industrial establishments, the following are worthy of special mention: The Best Light Company, manufacturing incandescent vapor gas lamps, which burn gas produced within the lamp itself from common gasoline. This concern is the LARGEST of its kind in the WORLD, and is growing rapidly. Its argument to consumers is unique. 'Form a corporation with yourself, and own your own gas company.'"

Copyright by the Best Light Co.

OUR REFERENCES.

Canton, Ohio, April 24th, 1906.

TO WHOM IT MAY CONCERN:

This is to certify that The Best Light Company, of this city, has been manufacturing all kinds of Street Lamps for Gas, Gasoline and Kerosene; also all kinds of Gasoline Burners, Fixtures, Appliances and Supplies, covering a period exceeding a quarter of a century. They are pioneers in the business, and their responsibility and integrity has never been questioned.

The concern is one of the most progressive and enterprising industries in the city.

THE DIKE SAVINGS BANK

Geo. B. Pipes, Treas.

FIRST NATIONAL BANK

L. T. Ziegler, V. P.

The Repository Oil Co.

Geo. B. Krease

Manager & Treas.

W. H. Douglas, President
Canton Board of Trade

Geo. B. Krease
Postmaster

We also refer to
Dun and Bradstreet.

THE "BEST" LIGHT

GIVES MOST SATISFACTORY
ILLUMINATION AT
LEAST COST.

Designed for Halls, Stores,
Churches, Lodges, Hotels,
Factories, Residences,
Streets, Parks,
Etc.

As a result of the extensive advertising and business done by this company the mail received by The Best Light Company is the largest coming to Canton. Every day orders are received from some of the forty-nine foreign agencies, and these orders, with the immense domestic trade of the company, keep the workmen busily employed the year round. The output of The Best Light Company is larger in volume than that of any factory of its kind in the world, and they are the heaviest shippers by either freight or express, in the business.—(From The Repository, Sunday, Sept. 20th, 1903.)

The City National Bank
C. B. Mack, Cashier

THE CITIZENS' BUILDING AND LOAN CO.

By William Wagner, Secy.

THE CENTRAL SAVINGS BANK COMPANY,

By J. H. Fisher, Cashier

J. S. D. Walker, Secretary
The Savings & Loan Co. of Canton, Ohio

The Farmers Bank
116 1/2 Franklin St.

City National Bank, Canton, O.

By J. H. Fisher, Cashier

The Canton Savings and Trust Co.

By J. H. Fisher, Cashier

A. R. Lumbell, Mayor
Franklin County
Quackmaster Jones
By W. H. Douglas, Cashier

THE "BEST" INCANDESCENT VAPOR GAS LAMP positively produces the cheapest and strongest light on earth. It is absolutely safe, very brilliant, powerful and steady. It is infinitely superior to electricity, gas acetylene or kerosene. One burner will give as much light as ten ordinary kerosene oil lamps, or six 16-candle power electric light bulbs, or six 16-candle-power gas jets, or five 20-candle power acetylene gas jets, or as much as one hundred candles burning at one time.

As each one hundred candle power burner consumes only one quart of stove gasoline in fifteen hours, it will be readily seen that this light is cheaper than kerosene oil lamps, and the saving effected by the use of this lamp quickly pays for it. Each lamp is a miniature light works that manufactures and burns its own gas; and as it is portable, you can hang or set it anywhere. They require no pipes, wires, tubes or machinery of any kind, and are the acme of simplicity in every sense of the word. There are no wicks to trim, no smoke or smell, no dirty, greasy chimneys to clean, and they are so simple in construction that anyone can operate them with ease and entire satisfaction. When you are in possession of one of these lamps you have simply formed a corporation with yourself and are absolute owner of your own Gas Works. You have no capricious gas meter to contend with. There are no dynamos to burn out and leave you in the dark when the light is most needed. There are no frozen gas pipes in midwinter, but you always have a good, strong, steady white light that can be relied upon. It is exceedingly easy to care for and can be carried about from one place to another because the fixtures are portable. The light can be turned up or down the same as a gas jet, or an ordinary kerosene oil lamp. When it is turned out, it goes out without flickering or smoking, and does not make a disagreeable noise or odor. With this light it is possible for the farmer of the most humble circumstances, or the country storekeeper to have a light equal to that of the city millionaire, the price being within the reach of all.

SAFETY.—Our lamps have been carefully examined, tested and permitted by the Underwriters' Bureau of Fire Protection Engineering of Chicago, and the Southern Fire Association of Atlanta, Ga., and many local underwriters' associations. Any lighting device passed by these bureaus can be relied upon as being absolutely safe. Insurance companies give permits gratis, as they recognize the lamp to be safe in every sense of the word. In fact, our lamps are safer than kerosene oil lamps, as the vent-tube in a kerosene oil lamp is liable to clog at any moment and cause an explosion. Such conditions do not exist in the "Best" Vapor Gas Lamps. The fount is isolated from the burner so that it is always cool. The surface of the fluid is not within one or two inches from the flame, as in a kerosene oil lamp, but it is always a goodly distance away so that the heat cannot generate gas in the fount.

Statistics gathered by fire insurance underwriters show that over 50 per cent. of the fire waste of the country is caused by electric light wires (imperfect insulation, etc) and that for every dollar's fire loss through gasoline there are two dollar's loss through kerosene. The Indianapolis Fire Insurance Co., of Indianapolis, Ind., says that "the universal use of the "Best" Vapor Gas Lamps would largely tend to lessen the fire waste of the country." There can be no stronger endorsement given as to the safety of a lighting device.

CONSTRUCTION.—We have had over thirty years' experience in manufacturing all kinds of burners and fixtures for producing light and heat, and it naturally follows that the "Best" lamp is the most practical, scientific, simple, durable, elegant and perfect on the market. To put it in a nutshell, the "Best" lamp is the best lamp, and as every lamp is guaranteed for one year, the purchaser will readily appreciate that a reliable concern would not guarantee an article unless it has been positively proven beyond a doubt that it is

as near perfect as it is possible to make it. All of our lamps are made from the very best of material by up-to-date, modern machinery, and none but skilled and experienced workmen are employed.

VARIETY OF STYLES.—We manufacture by far the largest variety of incandescent Vapor Gas Lamps in the world, and have the largest, oldest and only complete Incandescent Vapor Gas Lamp Works in the United States. We are the only manufacturers that make their own fixtures, from the brass castings up to the finishing, polishing and lacquering. We manufacture these lamps in all styles, from the plainest to the most elaborate. As some of the fixtures are finished very artistically, they can be used in the finest drawing-rooms in the land and will be an ornament. We make all styles of lamps for indoor and outdoor purposes ranging from 100 to 2,000 candle power. Our line covers over generators, under generators, gravity pressure and air pressure lamps of every description, also high and low pressure lighting systems.

OFFICIAL GUARANTEE.—We hereby guarantee the gravity "Best" Vapor Gas Lamps manufactured by us under our numerous patents, for a period of two years as to construction and practical mechanical working, and stipulate that they produce a light from 80 to 100 candle power, provided they are handled according to instructions. Should any lamp fail to fulfill this guarantee, we will replace any parts which upon investigation prove defective with new ones without charge. This does not apply to mantles, shades, chimneys, or glassware.

PATENTS.—We are absolute owners of many original patents, and now have many patents pending in the United States and foreign countries. Infringers will be vigorously prosecuted.

WARNING.—The "Best" Vapor Gas Lamps have had many imitations and there are still a few on the market. While the "Best" lamps have been imitated, they have never been equaled. The "Best" lamps are in a class distinctly their own. They are the only Vapor Gas Lamp that have also the rest of time. Beware of cheap imitations and infringing fixtures; also pirates who copy our printed matter. This light is often referred to as "The Light made in Canton." In short, it is the light that made Canton famous. Remember the name. The "Best" Light.

COMPARATIVE COST.

For Lighting a Room 20 x 60, 100 Hours a Month for One Year.

- 18 Incandescent Electric Lamps, 16-candle power, 288 candle power, 21,600 hours at 3/4 cents per hour, cost.....\$102.00
- 18 Gas Jets, 16 candle power each, 288 candle power, 5 feet per hour, per jet at \$1.00 per 1,000 feet, cost..... 108.00
- 12 Acetylene Gas Jets, 20 candle power each, 240 candle power, carbide at \$90.00 per ton, cost..... 100.00
- 3 Central Draught Oil Lamps, 75 candle power each, 225 candle power, one gallon of oil per burner, 10 hours at 6c, cost 21 00
- 3 "Best" Incandescent Gas Lights, 100 candle power each, 300 candle power, one gallon of gasoline per burner, 60 hours, 6c, cost..... 3.40

Do you want to save money? Then use the "Best" Incandescent Vapor Gas Light and burn Air instead of money. They give 50 per cent. more light than a Rochester Coal Oil Lamp, consume 80 per cent. less oil, and make 90 per cent. less heat.

One Light Fancy Pendant.

One Quart Reservoir.

100 Candle Power.



No. 129.

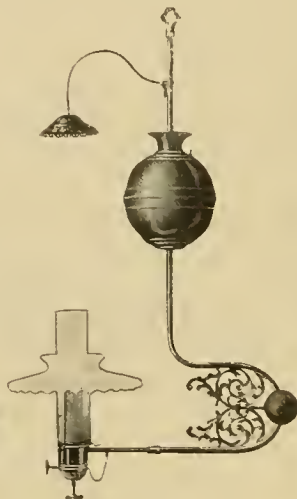
Length, 32 inches.
Width, 16 inches.
Weight, 4¼ lbs.
Made of Brass.

Polished and Lacquered.

One Light Fancy Pendant.

One Quart Reservoir.

100 Candle Power.



No. 130.

Length, 32 inches.
Width, 16 inches.
Weight, 4¼ lbs.
Made of Brass.

Polished and Lacquered.

One Light Fancy Pendant.

One Quart Reservoir.

100 Candle Power.



No. 131.

Length, 32 inches.
Width, 16 inches.
Weight, 4¼ lbs.
Made of Brass.

Polished and Lacquered.

One Light Fancy Pendant.

One Quart Reservoir.

100 Candle Power.



No. 132.

Length, 32 inches.
Width, 16 inches.
Weight, 4¼ lbs.
Made of Brass.

Polished and Lacquered.

One Light Fancy Pendant.

One Quart Brass Reservoir.
Invisible Filling Cap and
Indicator.

100 Candle Power.

Cast Brass Scrolls and Em-
bossed Balls.



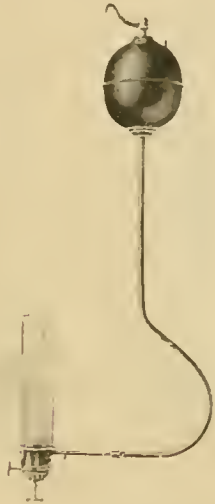
Length, 30 inches.
Width, 14 in. Weight, 4 lbs.

No. 4—Solid Brass
Polished and Lacquered.
No. 5—Oxidized Copper,
Polished and Lacquered.
No. 6—Nickel Plated.
Polished and Lacquered.

PLEASE ORDER BY NUMBER.

**One Light
Plain Pendant.**

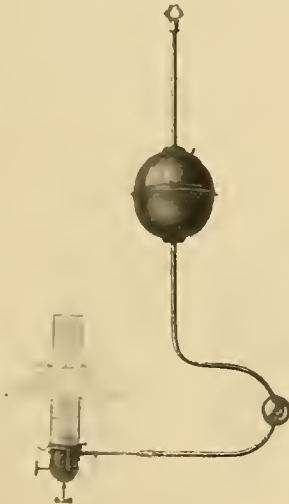
One Quart Brass Reservoir.
100 Candle Power.



Length, 30 inches.
Width, 13 inches.
Weight, 3 lbs.
No. 51.—All Brass Pendant.
No. 67.—Oxidized Copper.
No. 64.—Nickel Plated.

**One Light
Plain Pendant.**

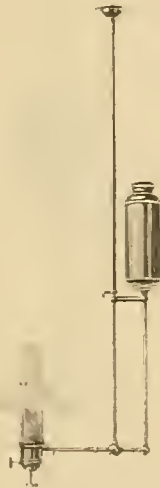
One Quart Brass Reservoir.
100 Candle Power.



Length, 30 inches.
Width, 14 inches.
Weight, 3½ lbs.
No. 39.—Finished in Maroon
Japan.
No. 43.—Finished in Oxidized
Copper.

**One Light
Pendant.**

Removable Reservoir.
100 Candle Power.



No. 37.
Nickel Plated and Polished.
Length, Adjustable, 40 to 60
inches.
Width, 12 inches.
Weight, 4½ lbs.

**One Light
Harp Fixture.**

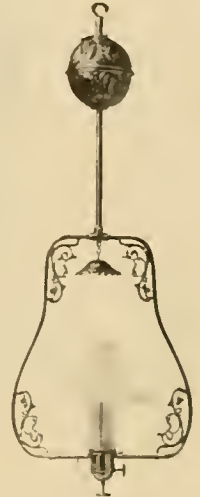
One Quart Brass Reservoir.
100 Candle Power.



Length, 36 inches.
Width, 14 inches.
Weight, 3 lbs.
No. 47.—Oxidized Copper.
No. 52.—Solid Brass.
No. 61.—Nickel Plated.

**One Light
Fancy Harp.**

One Quart Embossed Brass
Reservoir.
100 Candle Power.

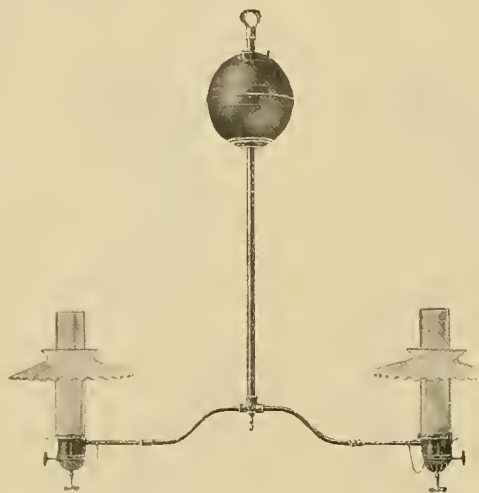


Length, 36 inches.
Width, 14 inches.
Weight, 3½ lbs.
No. 148.—Solid Brass.
No. 149.—Oxidized Copper.
No. 151.—Nickel Plated.

PLEASE ORDER BY NUMBER.

Plain Chandelier.

Made Entirely of Brass.
Two Quart Reservoir.
200 Candle Power.



Length, 30 inches. Spread, 24 inches.

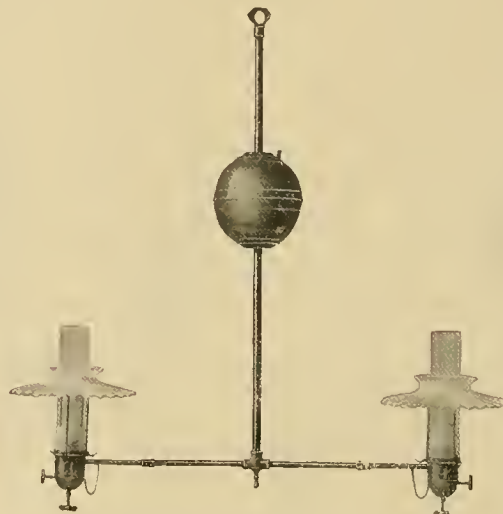
No. 55.—Brass.

No. 63.—Nickel.

No. 68.—Oxidized Copper.
Weight, 4 lbs.

Plain Chandelier.

Made Entirely of Brass.
Two Quart Reservoir.
200 Candle Power.



Standard Length, 30 inches.

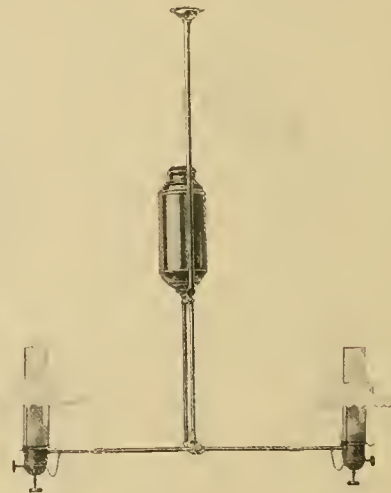
Spread, 24 inches.

No. 40.—2 Light, Maroon Japan. Weight, 4 $\frac{3}{4}$ lbs.

No. 44.—2 Light, Oxidized Copper. Weight, 4 $\frac{3}{4}$ lbs.

Two Light Chandelier.

Made of Brass.
Removable Reservoir.
200 Candle Power.



No. 38.

Nickel Plated and Polished.
Length Adjusted, 40 to 60 inches.

Spread, 27 inches.
Weight, 7 $\frac{1}{2}$ lbs.

PLEASE ORDER BY NUMBER.

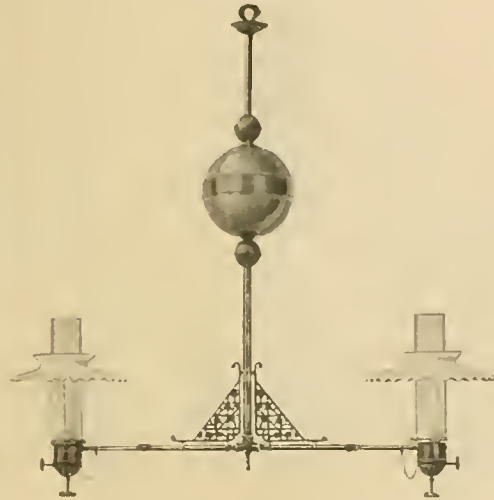
Fancy Chandelier.

Made of Brass.

Two Quart Brass Reservoir.

200 Candle Power.

Cast Brass Scrolls



Length, 30 inches. Spread, 24 inches.

No. 103.—Brass.

No. 104.—Oxidized Copper.

No. 105.—Nickel Plated.

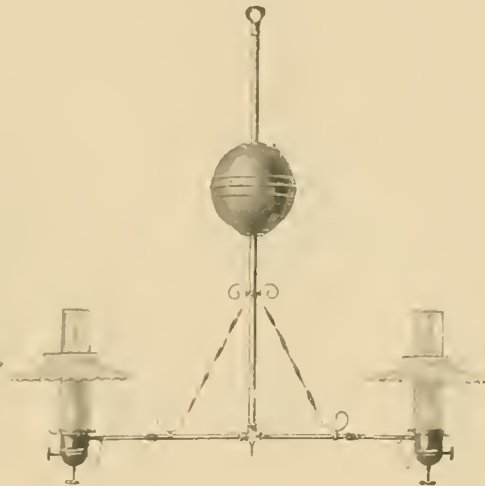
Weight, 5 lbs each.

Two Light Fancy Chandelier.

Made of Brass.

Two Quart Brass Reservoir.

200 Candle Power.



Length, 30 inches.

Spread, 24 inches.

No. 117.—Brass, Polished and Lacquered.

Weight, 4½ lbs.

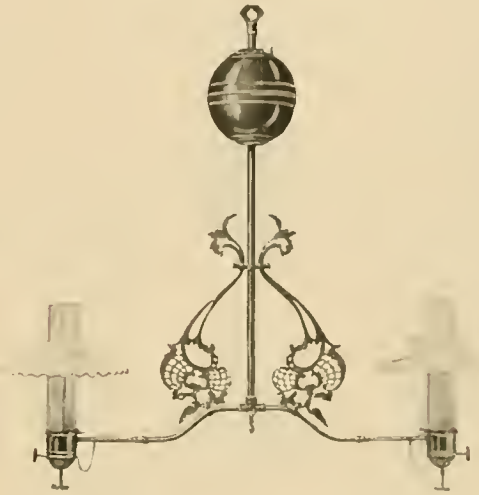
Fancy Chandelier.

Made of Brass.

Two Quart Brass Reservoir.

200 Candle Power.

Cast Brass Scrolls.



Length, 32 inches. Spread, 24 inches.

No. 145.—Solid Brass.

No. 146.—Oxidized Copper.

No. 147.—Nickel Plated.

Weight, 5 lbs.

PLEASE ORDER BY NUMBER.

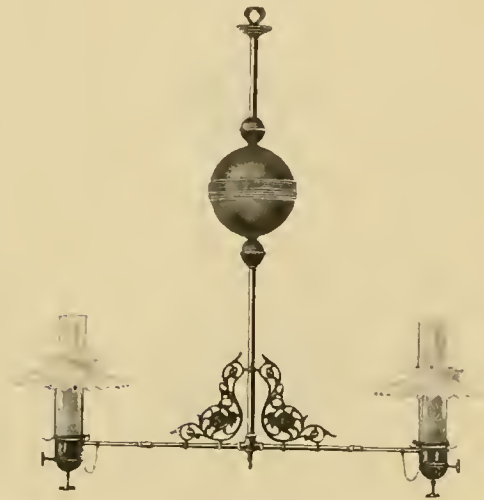
Two Light Fancy Chandelier.

Two Quart Brass Reservoir.

Invisible Filling Cap and Indicator.

200 Candle Power.

Cast Brass Scrolls.



Standard Length, 30 inches.

FINISH.

SPREAD.

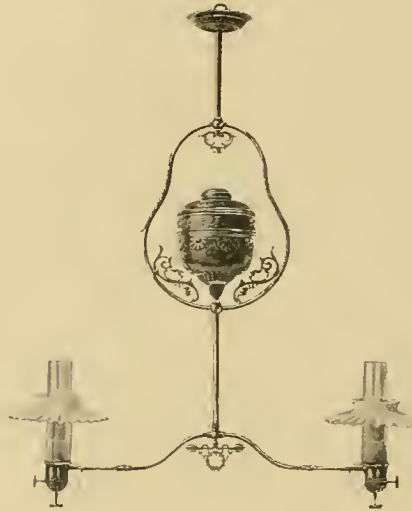
	24 in.	36 in.	48 in.
Solid Brass, Pol. and Lac.	No. 7	No. 8	No. 9
Oxidized Copper, Polished and Lacquered	No. 10	No. 11	No. 12
Nickel Plated, Polished and Lacquered	No. 13	No. 14	No. 15
Weight,	5 lbs.	5 lbs.	5 ¼ lbs.

Two Light Fancy Chandelier.

Two Quart.

Removable Brass Reservoir.

200 Candle Power.



No. 34.

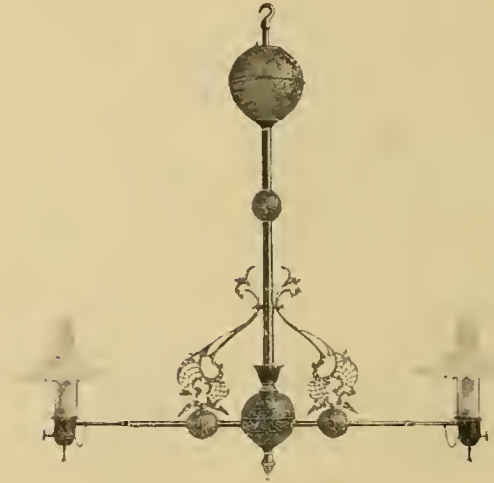
Solid Brass, Polished and Lacquered.
Length, 40 inches. Spread, 26 inches.
Weight, 7 lbs.

Length can be made 34 inches.
A very fine fixture. Highly ornamental.

Two Light Fancy Chandelier

Two Quart Embossed Brass Reservoir.

200 Candle Power.



No. 35.

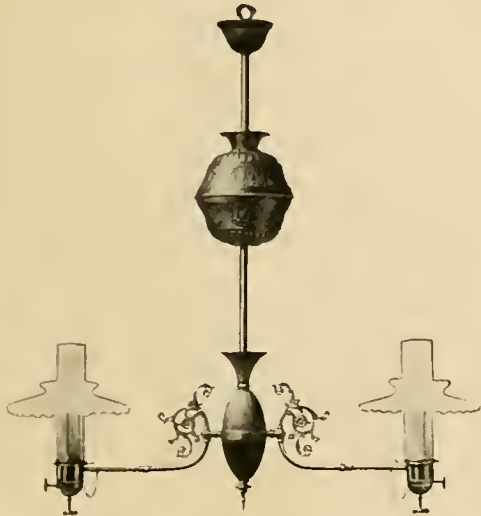
Solid Brass, Polished and Lacquered.
Length, 40 inches. Spread, 36 inches.
Weight, 9 lbs.

The handsomest fixture on the market. The cut does not do it justice. An ornament to any room. Cast Brass Scrolls. Embossed Reservoir and Balls. Elegant.

PLEASE ORDER BY NUMBER.

Two Light Fancy Chandelier.

Made of Brass,
200 Candle Power.



No. 133.

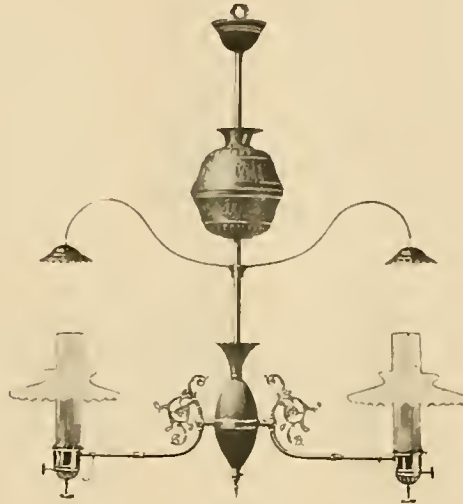
Length, 36 inches. Spread, 26 inches.

Weight, 6 lbs.

Finished in Oriental Brass.

Two Light Fancy Chandelier.

Made of Brass,
200 Candle Power.



No. 134.

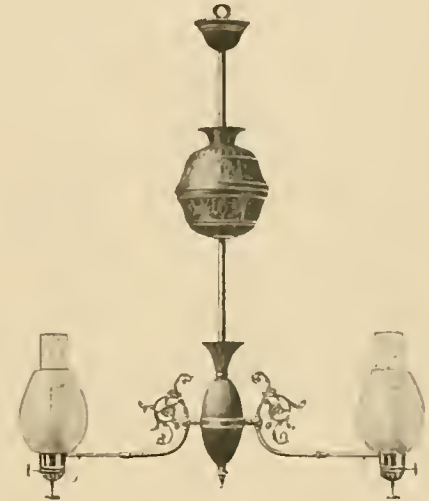
Length, 36 inches. Spread, 26 inches.

Weight, 6 1/2 lbs.

Finished in Oriental Brass.

Two Light Fancy Chandelier.

Made of Brass,
200 Candle Power.



No. 135.

Length, 36 inches. Spread, 26 inches.

Weight, 6 lbs.

Finished in Oriental Brass.

PLEASE ORDER BY NUMBER.

Two Light Fancy Chandelier.

Made of Brass.
Embossed Reservoir and
200 Candle Power.

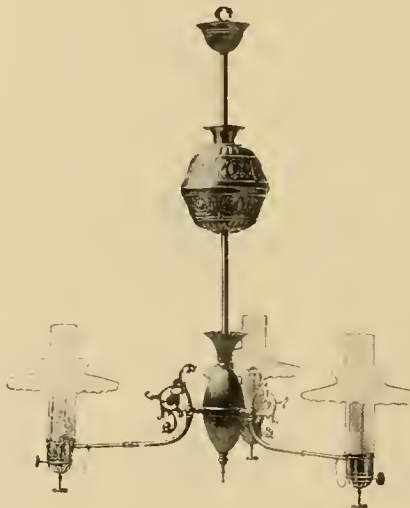
**No. 136.**

Length, 36 inches.
Spread, 26 inches.
Weight, 6 ½ lbs.

Finished in Oriental Brass.

Three Light Fancy Chandelier.

Made of Brass.
300 Candle Power.

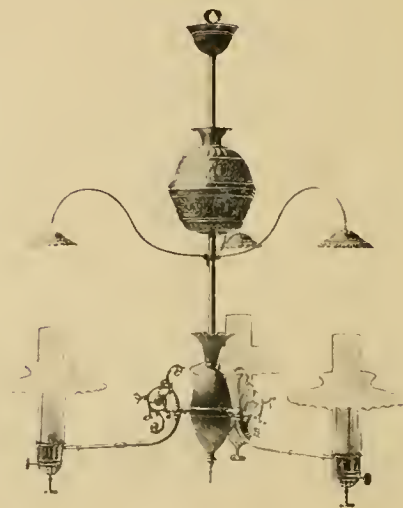
**No. 137.**

Length, 36 inches.
Spread, 26 inches.
Weight, 8 lbs.

Finished in Oriental Brass.

Three Light Fancy Chandelier.

Made of Brass.
300 Candle Power.

**No. 138.**

Length, 36 inches.
Spread, 26 inches.
Weight, 8 ½ lbs.

Finished in Oriental Brass.

PLEASE ORDER BY NUMBER.

Three Light Fancy Chandelier.

Made of Brass.
300 Candle Power.



No. 139.

Length, 36 inches. Spread, 26 inches.

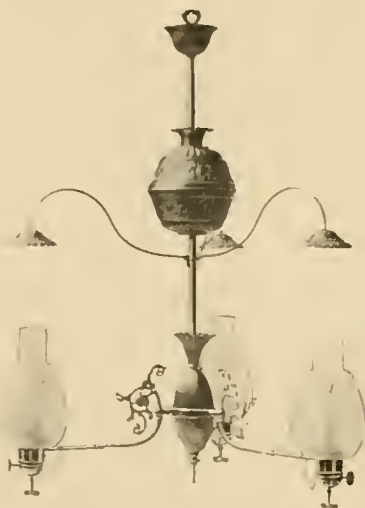
Weight, 8 ½ lbs.

Finished in Oriental Brass.

Choice of 6696 or 6246 Globes.

Three Light Fancy Chandelier.

Made of Brass.
300 Candle Power.



No. 140.

Length, 36 inches. Spread, 26 inches.

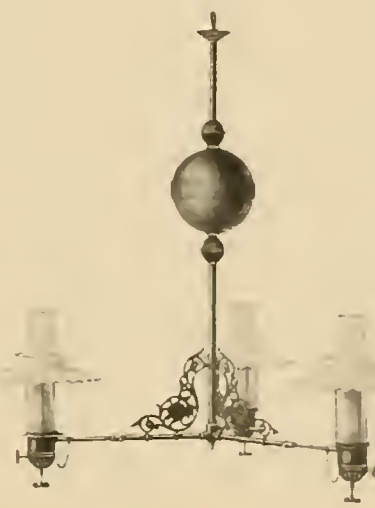
Weight, 9 lbs.

Finished in Oriental Brass.

Choice of 6696 or 6246 Globes.

Three Light Fancy Chandelier.

Made of Brass.
300 Candle Power.



Length, 30 inches. Spread, 24 inches.

No. 106.—Brass, Polished.

No. 108.—Oxidized Copper.

No. 109.—Nickel Plated.

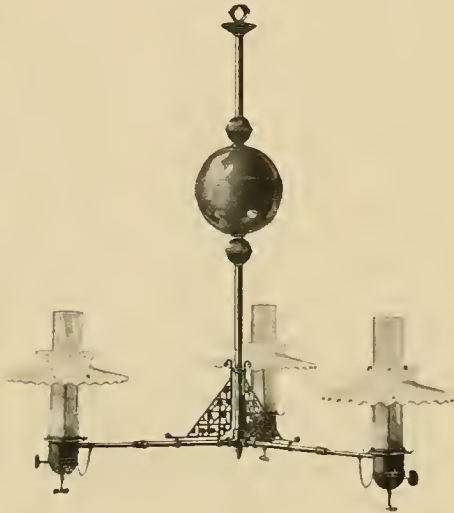
Weight, 6 ½ lbs.

PLEASE ORDER BY NUMBER.

Three Light Fancy Chandelier

Made of Brass.

300 Candle Power.



Length, 30 inches.

FINISH

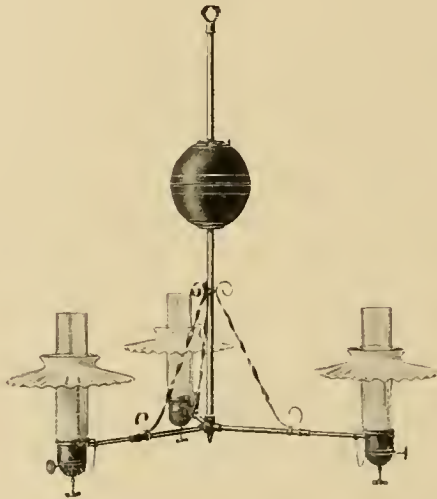
SPREAD.

	24 in.	36 in.	48 in.
Solid Brass, Pol. and Lac.	No. 16	No. 17	No. 18
Oxid. Cop., Pol. and Lac.	No. 19	No. 20	No. 21
Nickel Plat., Pol. and Lac.	No. 22	No. 23	No. 24
Weight,	7 lbs.	7 3/4 lbs.	8 lbs.

Three Light Fancy Chandelier.

Made of Brass.

300 Candle Power.



Length, 30 inches.

Spread, 24 inches.

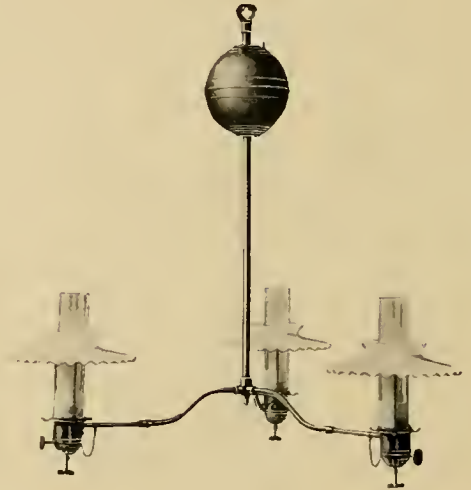
No. 118.—Brass, Highly Polished and Lac.

Weight, 6 lbs.

Three Light Plain Chandelier.

Made of Brass.

300 Candle Power.



Length, 30 inches. Spread, 24 inches.

No. 56.—Brass, Polished.

No. 65.—Nickel Plated.

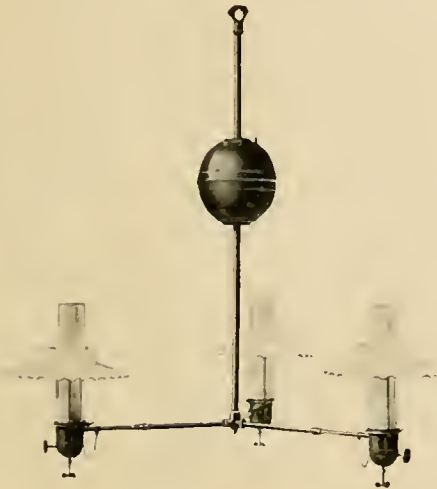
No. 69.—Oxidized Copper.

Weight of each, 6 lbs.

PLEASE ORDER BY NUMBER.

Three Light Chandelier.

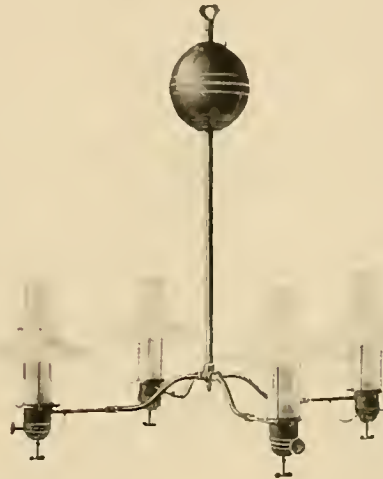
Made of Brass.
300 Candle Power.



Length, 30 inches.
Spread, 24 inches.
No. 41.—Maroon Japan.
No. 45.—Oxidized Copper.
Weight of each, 5½ lbs.

Four Light Chandelier.

Made of Brass.
400 Candle Power.



Length, 30 inches.
Spread, 24 inches.
No. 57.—Brass, Polished.
No. 66.—Nickel Plated.
No. 70.—Oxidized Copper.
Weight of each, 7 lbs.

Four Light Chandelier.

Made of Brass.
400 Candle Power.



Length, 30 inches.
Spread, 24 inches.
No. 42.—Maroon Japan.
No. 46.—Oxidized Copper
Weight of each, 7 lbs

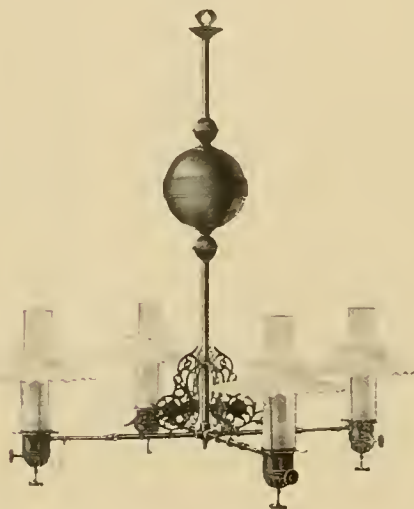
PLEASE ORDER BY NUMBER.

Four Light Fancy Chandelier.

Made of Brass.

Invisible Filling Cap and Indicator.

400 Candle Power.



Length, 30 inches.

Spread, 24 inches.

No. 110.—Brass, Polished.

No. 111.—Oxidized Copper.

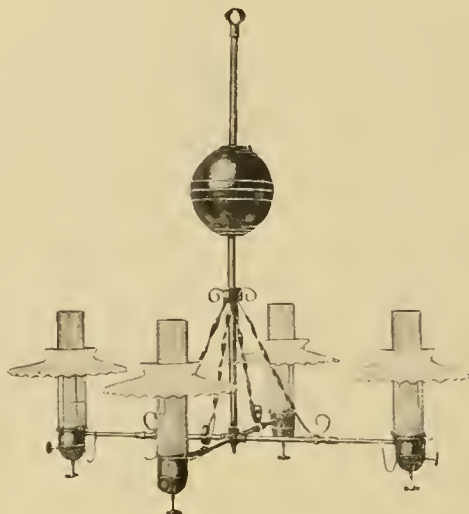
No. 112.—Nickel Plated.

Weight, 8½ lbs. each.

Four Light Fancy Chandelier.

Made of Brass.

400 Candle Power.



Length, 30 inches.

Spread, 24 inches.

No. 119.—Brass, Highly Polished and Lac.

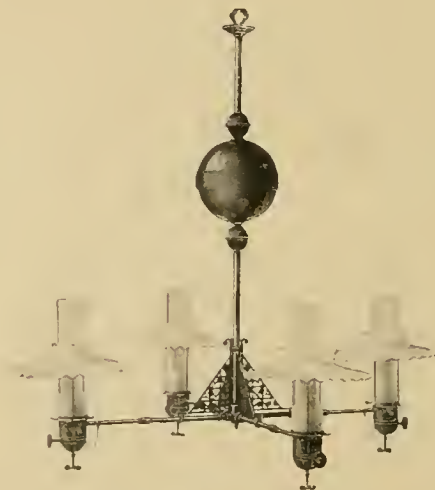
Weight, 7½ lbs.

Four Light Fancy Chandelier.

Made of Brass.

Invisible Filling Cap and Indicator.

400 Candle Power.



Standard Length, 30 inches.

FINISH.

SPREAD.

24 in. 36in. 48 in.

Solid Brass, Pol. and Lac. No. 25 No. 26 No. 27

Oxid. Cop., Pol. and Lac. No. 28 No. 29 No. 30

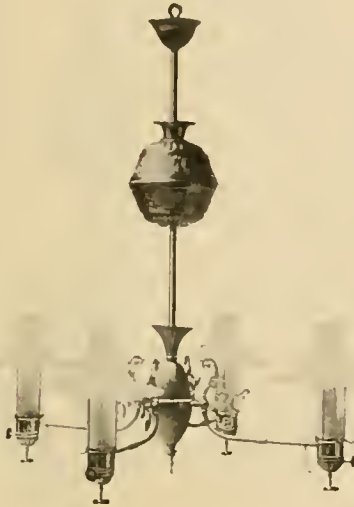
Nickel Plated, Pol. & Lac. No. 31 No. 32 No. 33

Weight, 8 lbs. 8¼lbs. 8½lbs.

PLEASE ORDER BY NUMBER.

Four Light Fancy Chandelier.

Made of Brass.
400 Candle Power.



No. 141.

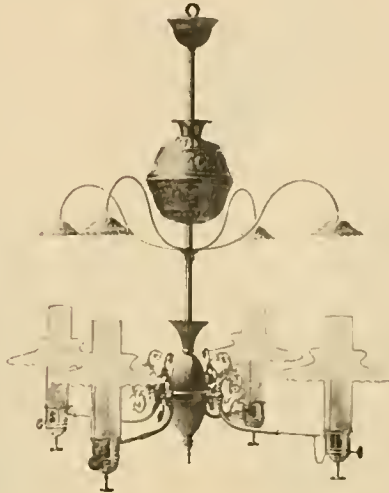
Length, 36 inches. Spread, 26 inches.

Weight, 10 lbs.

Finished in Oriental Brass.

Four Light Fancy Chandelier.

Made of Brass.
400 Candle Power.



No. 142.

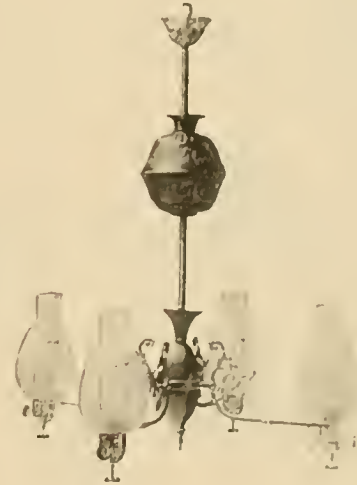
Length, 36 inches. Spread, 26 inches.

Weight, 10½ lbs.

Finished in Oriental Brass.

Four Light Fancy Chandelier.

Made of Brass.
400 Candle Power.



No. 143.

Length, 36 inches. Spread, 26 inches.

Weight, 10 lbs.

Finished in Oriental Brass.

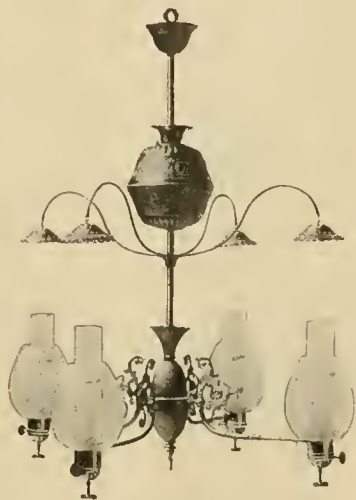
Choice of 6696, 6246 or 6336 Fancy Globes.

PLEASE ORDER BY NUMBER.

Four Light Fancy Chandelier.

Made of Brass.

400 Candle Power.



No. 144.

Length, 36 inches. Spread, 26 inches.

Weight, 10½ lbs.

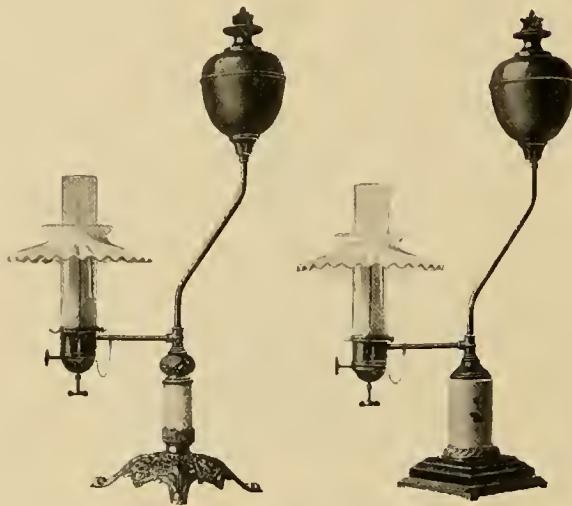
Finished in Oriental Brass.

Choice of 6696, 6246 or 6336 Fancy Globes.

Fancy Student Lamps.

For Home or Office.

100 Candle Power, Each.



No. 53.

No. 3.—Fancy Stand Lamp, Ebony and Porcelain Base. Very neat. 26 inches high, 12 inches wide. Weight, 5 lbs.

No. 53.—Fancy Stand Lamp with Genuine Onyx and 22-karat Gold Plate Base. Elegant. 26 in. high, 12 in. wide. Weight, 5 lbs.

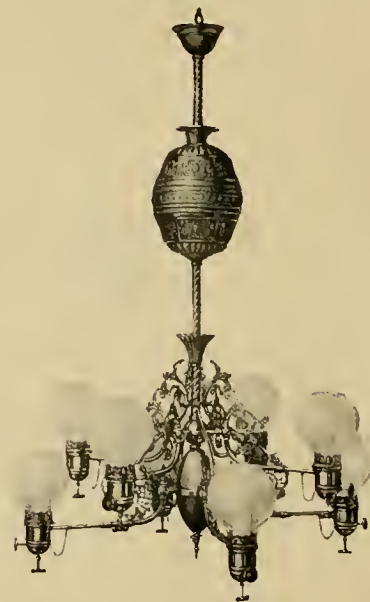
One Quart Brass Founts.

No. 3.

Eight Light Fancy Chandelier.

Made of Brass.

800 Candle Power.



No. 190.

Length, 42 inches. Spread, 28 inches.

Weight, 18 lbs.

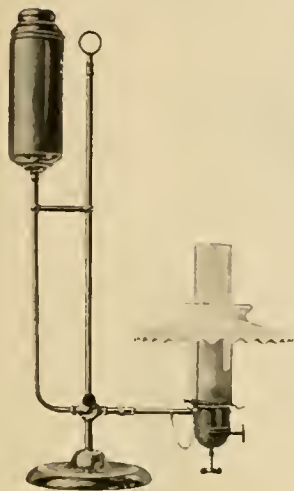
In Polished Brass or Oxidized Copper, with Clear Globes, Frosted Tops.

This is a Fine Church Lamp.

PLEASE ORDER BY NUMBER.

Plain Student Lamp.

Removable Reservoir.
100 Candle Power.



No. 78.

Length, 25 inches.
Width, 11 inches.
Weight, 7 lbs.

Reservoir and Burner can be raised or lowered and swings a complete circle. Set Screw holds it in any position. Made entirely of brass, nickel plated. Not as large, heavy, or as good as our No. 36.

Student Lamp.

Removable Reservoir.
100 Candle Power.



No. 36.

Length, 25 in. Width, 9 in.
Weight, 8 lbs.

Complete with White Dome and Eye Shade.

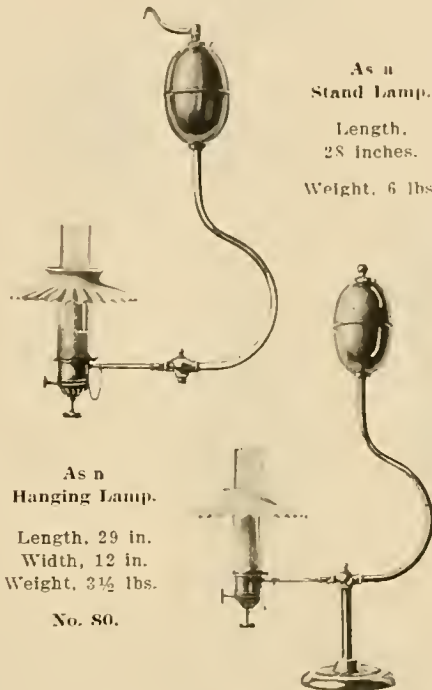
Nickel Plated and Polished.

Light can be raised or lowered.

An ideal Reading or Sewing Lamp.

Combination Lamp.

One Quart Reservoir.
100 Candle Power.



As a
Stand Lamp.

Length,
28 inches.

Weight, 6 lbs.

As a
Hanging Lamp.

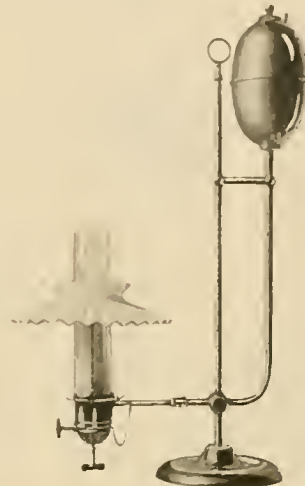
Length, 29 in.
Width, 12 in.
Weight, 3 1/4 lbs.

No. 80.

This Lamp is unique, and is made entirely of brass, nickel plated.

Plain Student Lamp.

Fixed Reservoir, One Quart.
100 Candle Power.



No. 77.

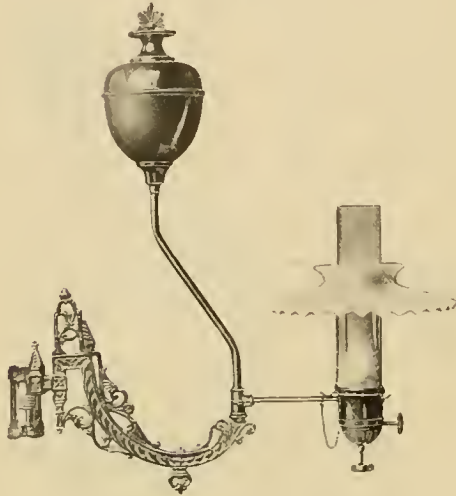
Length, 24 in. Width, 11 in.
Weight, 6 1/2 lbs

Reservoir and Burner can be raised or lowered and swings a complete circle. Set Screw holds it in any position. Made entirely of brass, nickel plated

PLEASE ORDER BY NUMBER.

Fancy Bracket Lamp.

All Brass.
100 Candle Power.



No. 75.

Length, 22 inches. Width, 14 inches.

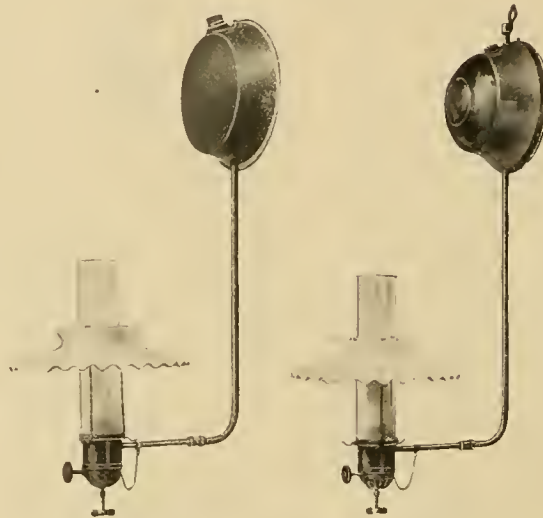
Weight, 3 1/2 lbs.

A very convenient lamp for show windows, walls, etc., where a stand or hanging lamp is not desired. Bracket swings to right or left and can easily be detached from wall plate.

A very handsome Lamp.

Wall Lamp.

100 Candle Power, Each.



No. 1.

Very Convenient Portable Lamps.
Length, 24 inches. Width, 9 inches.
Weight, 2 3/4 lbs.

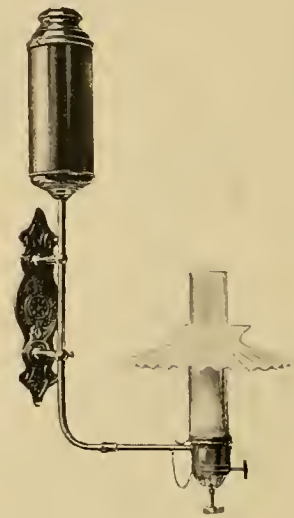
No. 2.

No. 1.—Plain Maroon Japanned Wall Lamp.
No. 2.—All Brass Wall Lamp, Highly Polished.
No. 62.—All Brass Wall Lamp, Nickel Plated.
No. 71.—All Brass Wall Lamp, Oxidized Copper.
Founts hold One Quart.

The "BEST"

Bracket Lamp.

100 Candle Power.



No. 74. Nickel Plated.

Length, 27 inches. Width, 14 inches.

Weight, 4 lbs.

This is a very convenient Lamp where a Stand or Hanging Lamp is not desired. Swings to right and left. Removable Reservoir. An ornament to any room. Nicely finished.

PLEASE ORDER BY NUMBER.

Small Brass Wall Lamp.

One and One-Half Pint Reservoir.

100 Candle Power.



No. 79.

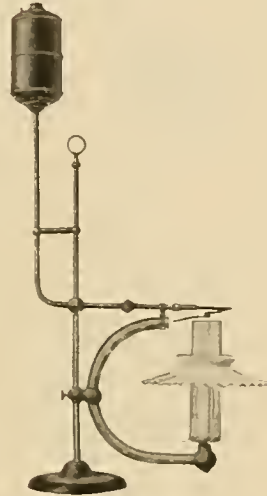
Length, 26 in. Width, 9 in.

Weight, 2 lbs.

Made entirely of Brass, highly polished and well lacquered to avoid tarnishing. Not as large, heavy, or as good as No. 2 Brass Wall Lamp.

Student or Stand Lamp.

One Quart Reservoir.
"Light with a Match."
No Alcohol Used.
100 Candle Power.



No. 86.

Overhead Generator.

Weight, 8 lbs.

This Student Lamp embodies all that is good. Can be lowered or raised. Swings from side to side. This fixture is made entirely of Brass. Finished in Oxidized Copper.

One Light Pendant.

One Quart Reservoir.
"Light with a Match."
No Alcohol Used.
100 Candle Power.



No. 90.

Overhead Generator.

Length, 32 in. Width, 11 in.

Weight, 3 1/2 lbs.

This fixture has handsomely spun bowl and perfect hanger adjustment. Has rigid arm. Made entirely of Brass. Finished in Oxidized Copper.

One Light Pendant.

One Quart Reservoir.
"Light with a Match."
No Alcohol Used.
100 Candle Power.



No. 89.

Overhead Generator.

Length, 32 in. Width, 11 in.

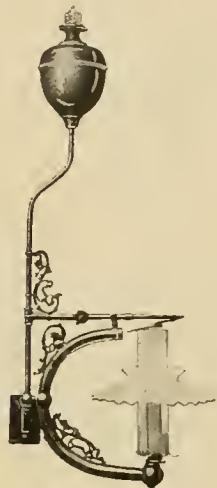
Weight, 4 lbs.

A very desirable fixture for a hall or ordinary room. Made entirely of Brass. Finished in Oxidized Copper.

PLEASE ORDER BY NUMBER.

Fancy Wall Bracket.

One Quart Reservoir.
"Light with a Match."
100 Candle Power.



No. 126.

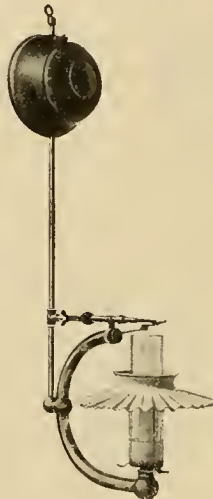
Overhead Generator.

Length, 32 inches.
Width, 11 inches.
Weight, 4½ lbs.
Oxidized Copper.

Swings In Wall Plate to any
position

Side or Wall Lamp.

One Quart Reservoir.
"Light with a Match."
No Alcohol Used.
100 Candle Power.



No. 92.

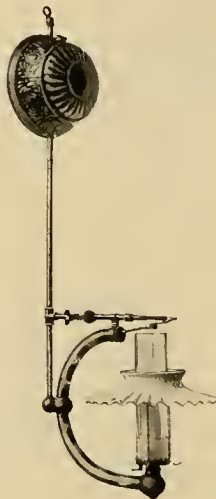
Overhead Generator.

Length, 32 inches. Width, 11 inches.
Weight, 3½ lbs.

No. 92 is made for permanent service. A steady, clear, powerful white light. Can be hung wherever a nail can be driven. Finished in oxidized copper.

Side or Wall Lamp.

One Quart Reservoir.
"Light with a Match."
No Alcohol Used.
100 Candle Power.



No. 93.

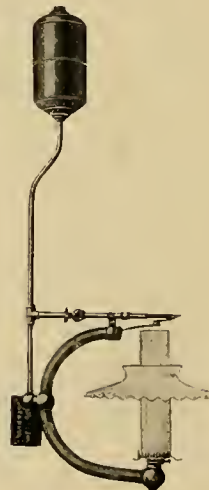
Overhead Generator.

Length, 32 inches. Width, 11 inches.
Weight, 3½ lbs.

No. 93 is graceful, but not expensive. A very neat design. Will last a lifetime and give entire satisfaction to the end. Finished in oxidized copper, embossed Reservoir.

Wall Bracket.

One Quart Reservoir.
"Light with a Match."
No Alcohol Used.
100 Candle Power.



No. 91.

Overhead Generator.

Length, 32 inches.
Width, 11 inches.
Weight, 4 lbs.

Swings in Wall Plate to any
position.

PLEASE ORDER BY NUMBER.

Harp Lamp.

One Quart Reservoir.
 "Light with a Match."
 No Alcohol Used.
 100 Candle Power.



No. 122.

Overhead Generator.

Length, 36 inches.
 Width, 12 inches.
 Weight, 4¼ lbs.
 Oxidized Copper.

Harp Lamp.

One Quart Embossed Reservoir.
 Ten Brass Scrolls.
 "Light with a Match."
 No Alcohol Used.
 100 Candle Power.



No. 123.

Overhead Generator.

Length, 36 inches.
 Width, 13 inches.
 Weight, 5¼ lbs.
 Oxidized Copper.

Harp Lamp.

One Quart Embossed Reservoir.
 Ten Brass Scrolls.
 "Light with a Match."
 No Alcohol Used.
 100 Candle Power.



No. 124.

Overhead Generator.

Length, 36 inches.
 Width, 13 inches.
 Weight, 5½ lbs.
 Oxidized Copper.

One Light Pendant.

One Quart Embossed Reservoir.
 "Light with a Match."
 No Alcohol Used.
 100 Candle Power.

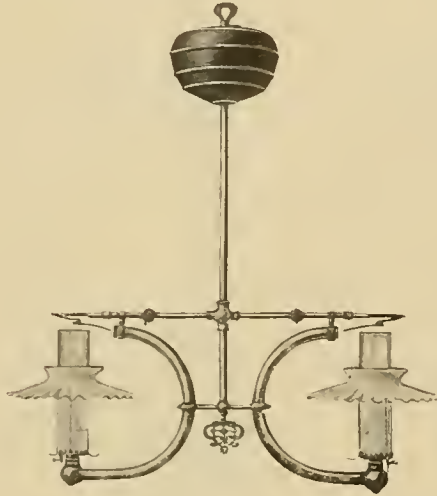


No. 125.

Overhead Generator.

Length, 31 inches.
 Width, 11 inches.
 Weight, 4 lbs.
 Oxidized Copper

PLEASE ORDER BY NUMBER.

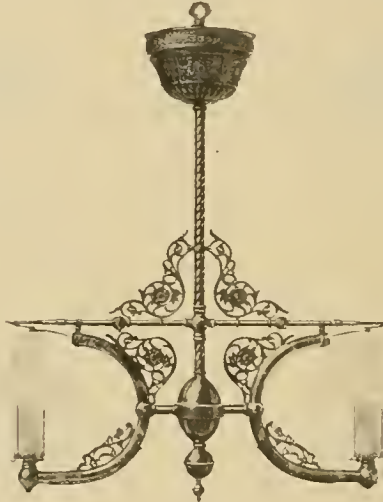
Two Light Chandelier.**Two Quart Reservoir.****"Light with a Match." No Alcohol Used.****200 Candle Power.****No. 87.****Overhead Generator.**

Length, 33 inches. Spread, 24 inches.

Weight, 6 lbs.

This fixture has rigid arms. A complete gas plant.

Finished in Oxidized Copper.

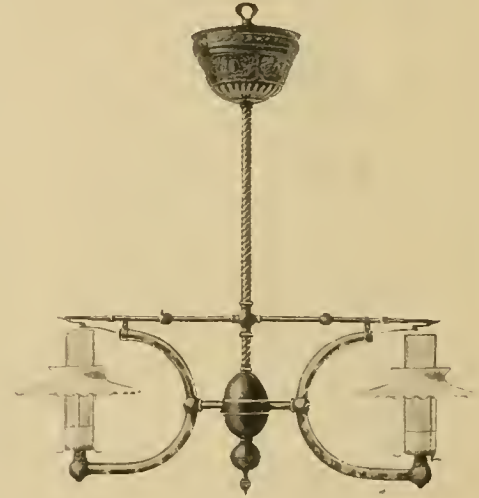
Fancy Two Light Chandelier.**Two Quart Embossed Reservoir.****"Light with a Match." No Alcohol Used.****200 Candle Power.****No. 127.****Overhead Generator.**

Length, 33 inches. Spread, 25 inches.

Weight, 9 lbs.

A very Fancy Lamp. Embossed Reservoir. Rope design Tubing and Eight Cast Brass Scrolls.

Finished in Oxidized Copper.

PLEASE ORDER BY NUMBER.**Two Light Chandelier.****Two Quart Embossed Reservoir.****"Light with a Match." No Alcohol Used.****200 Candle Power.****No. 88.****Overhead Generator.**

Length, 33 inches. Spread, 25 inches.

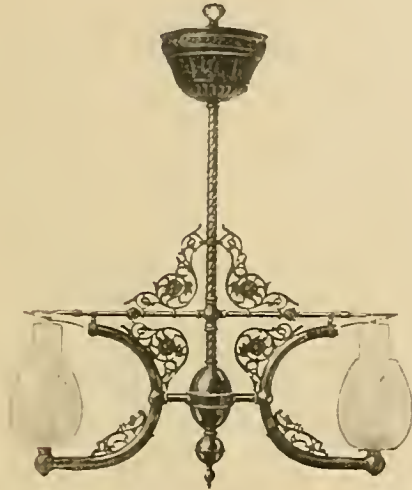
Weight, 8 lbs.

An ornament to any parlor. This fixture has Rigid Arms, Embossed Reservoir, Rope Design Tubing.

Finished in Oxidized Copper.

Fancy Two Light Chandelier.

Two Quart Embossed Reservoir.
"Light with a Match." No Alcohol Used.
200 Candle Power.



No. 128.

Overhead Generator.

Length, 33 inches. Spread, 25 inches.
Weight, 9 lbs.

A very Fancy Lamp. Embossed Reservoir, Rope
Design Tubing, and Eight Cast Brass Scrolls.

Finished in Oxidized Copper.

Three Light Chandelier.

Two Quart Reservoir.
"Light with a Match." No Alcohol Used.
300 Candle Power.



No. 191.

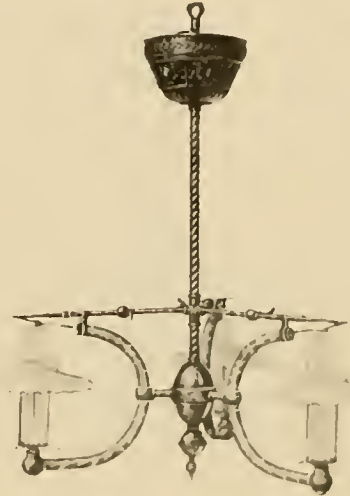
Overhead Generator.

Length, 33 inches.
Spread, 24 inches.
Weight, 8 lbs.

Finished in Oxidized Copper.

Three Light Chandelier.

Two Quart Embossed Reservoir.
"Light with a Match." No Alcohol Used.
300 Candle Power.



No. 193.

Overhead Generator.

Length, 33 inches.
Spread, 25 inches.
Weight, 10 lbs.

Finished in Oxidized Copper.

PLEASE ORDER BY NUMBER.

Fancy Three Light Chandelier.

Two Quart Embossed Reservoir.
 "Light with a Match." No Alcohol Used.
 300 Candle Power.



No. 195.

Overhead Generator.

Length, 33 inches.

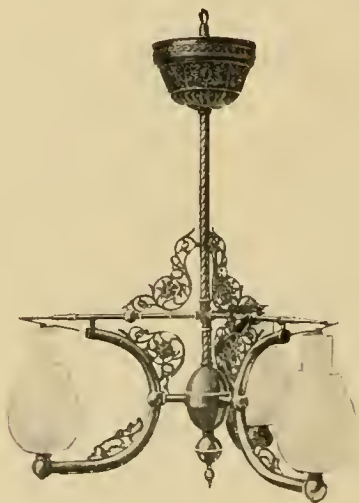
Spread, 25 inches.

Weight, 11 lbs.

Finished in Oxidized Copper.

Fancy Three Light Chandelier.

Two Quart Embossed Reservoir.
 "Light with a Match." No Alcohol Used.
 300 Candle Power.



No. 197.

Overhead Generator.

Length, 33 inches.

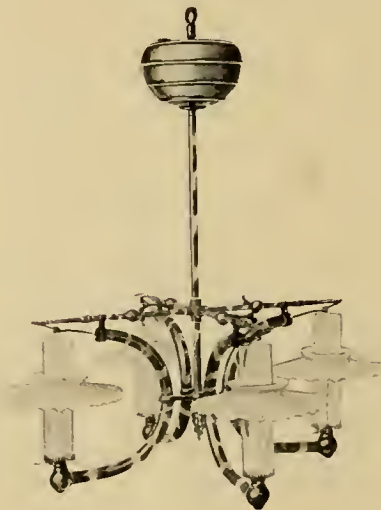
Spread, 25 inches.

Weight, 11 lbs.

Finished in Oxidized Copper.

Four Light Chandelier.

Two Quart Reservoir.
 "Light with a Match." No Alcohol Used.
 400 Candle Power.



No. 192.

Overhead Generator.

Length, 33 inches.

Spread, 24 inches.

Weight, 10½ lbs.

Finished in Oxidized Copper.

PLEASE ORDER BY NUMBER.

Fancy Four Light Chandelier.

Two Quart Embossed Reservoir.
"Light with a Match." No Alcohol Used.
400 Candle Power.



No. 194.

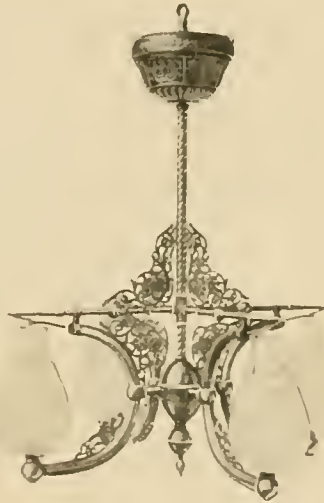
Overhead Generator.

Length, 33 inches.
Spread, 25 inches.
Weight, 12 lbs.

Finished in Oxidized Copper.

Fancy Four Light Chandelier.

Two Quart Embossed Reservoir.
"Light with a Match." No Alcohol Used.
400 Candle Power.



No. 198.

Overhead Generator.

Length, 33 inches.
Spread, 25 inches.
Weight, 14 lbs.

Finished in Oxidized Copper.

Fancy Four Light Chandelier.

Two Quart Embossed Reservoir.
"Light with a Match." No Alcohol Used.
400 Candle Power.



No. 196.

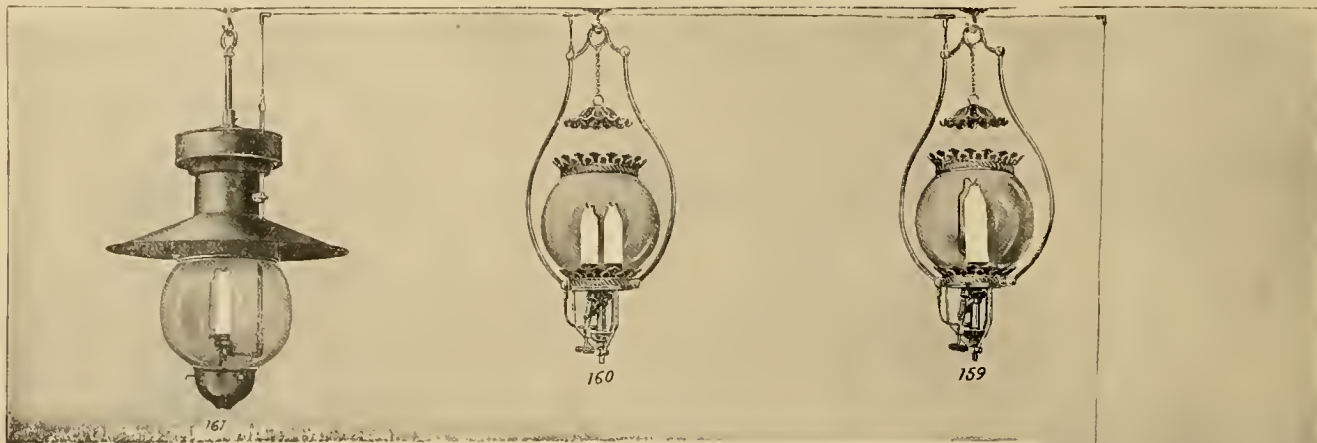
Overhead Generator.

Length, 33 inches.
Spread, 25 inches.
Weight, 14 lbs.

Finished in Oxidized Copper.

PLEASE ORDER BY NUMBER.

Lighting Systems for Stores, Cafes, Churches, Halls, Etc.



**SUPPLEMENT TO PRICE LIST NO. 599 AND SUBJECT TO SAME DISCOUNT.
PRICE LIST FOR THE "BEST" LIGHTING SYSTEM.—HIGH PRESSURE,**

No.	LAMPS AND TANKS.	List Price.	Code Word.
157	5-gal. Tank, with Pump, Gauge and Fittings	\$18.00	Evacuate
158	10-gal. Tank, with Pump, Gauge and Fittings	24.00	Evade
159	600 Candle-power Indoor Lamp	10.00	Evaporate
160	1200 Candle-power Indoor Lamp	12.00	Evangelic
161	600 Candle-power Outdoor Lamp	14.00	Evening
	Above subject to same discount as "Lamps."		

SUPPLIES.

	Price.	Code.
1/8-in. Seamless Copper Tub'g, in blk. per ft.	.04	Ever
1/8-in. Seamless Copper Tub'g, cut to order brazed and tested, per foot.	.05	Album
Blind Plug	.08	Albert
Nut, Tail Piece and Blind Plug	.15	Alas
Nut and Tail Piece	.08	Alarm
Tee, or 3-way	.08	Abate
Cross, or 4-way	.10	Albany
Sleeve, for connecting tubing	.06	Albite
Above subject to same discount as "Supplies."		

We quote on goods made of the very best material, in a workmanlike manner. Nothing cheap or shoddy. Lamps No. 159 and 160 are made entirely of brass and nickel-plated (or oxidized copper if ordered) and are very beautiful. Nos. 159 and 161 have a 5-inch pressure mantle and will give from 600 to 700 candle power each. Lamp No. 161 has two 3 1/2-inch pressure mantles, and will give from twelve to fourteen hundred candle power. Each lamp is generated separately with an alcohol drip-cup, but all the lamps on the system can be turned out at once at the tank. A five-gallon tank will accommodate about four lamps and a ten-gallon tank about eight or nine lamps. Each lamp consumes one quart of gasoline in three hours, and can be operated independently of the others; that is, one, two, or any number of the lamps on the system can be used at one time.

Tanks hold half of the indicated capacity of gasoline, balance of the tank is used for air space.

If you will furnish us with a diagram showing the height of the ceiling, and where you intend placing the lamps and the tank, also the distance between the tank and the first lamp and the distance between each lamp, we will cut the tubing to the proper lengths and make connections all complete, so that upon the arrival of the system, you can immediately put it in place.

Tanks are made of heavy sheet steel and galvanized, the same as hot water boilers. They are tested to a pressure of 200 pounds to the square inch, while the working pressure will never exceed 40 pounds. The weight of the 5-gallon tank WITHOUT fittings is 23 pounds; of the 10-gallon tank, 40 pounds. This will give you some idea as to the strength, quality and safety of these tanks.



Low Pressure System--All Kinds of Lamps--For Homes, Stores, Churches, etc.



PRICE LIST FOR THE "BEST" LIGHTING SYSTEM.—LOW PRESSURE.

No.	LAMPS AND TANKS.	List Price.	Code Word.
102	Wall Bracket Lamp	\$ 0.00	Excuse
103	2-gal. Tank, with Gauge & Fittings.	9.00	Everse
104	5-gal. Tank, with Gauge & Fittings.	12.00	Exalt
105	10-gal. Tank, with Gauge & Fittings.	10.00	Exclaim
106	Pump with Hose	1.00	Expose
Above subject to same discount as "Lamps."			

This cut illustrates our Low Pressure Lighting System, and shows how any number of lamps can be operated from one tank. This does away with filling a tank on each lamp, and makes it very convenient where two or more lamps are used for lighting. The candle power of each burner is from 200 to 500—it all depends upon the pressure placed on the tank, which is never operated at a pressure exceeding ten pounds. It all depends upon the number of feet of tubing used on the system and the number of lamps. The consumption of gasoline is one quart in seven to nine hours per burner. It depends upon the pressure of the tank. The greater the candle power, the greater the consumption of gasoline.

Any of our underneath or overhead generator lamps illustrated in our catalogue can be used on this system. This illustration shows No. 5 Pendant, No. 133 Chandelier, No. 47 Harp, and No. 162 Bracket Lamp. In ordering lamps for the Low Pressure Lighting System, give the number of the lamp and the letter "S" after it. By this we will know that you want the lamps made without reservoirs and with fittings for the "Best" Lighting System. These lamps cannot be used on a high pressure system. This system is the most economical on the market, producing the most light for the least money. Each lamp is guaranteed separately, but

SUPPLIES.		Price.	Code.
1/2-in. Seamless Copper Tub'g. In blk. per ft.	brazed and tested, per foot.05	Album
Blind Plug00	Albert
Nut and Tall Piece08	Alarm
Nut, Tall Piece and Blind Plug15	Alas
Tee, or 3-way08	Abate
Cross, or 4-way10	Albany
Sleeve, for connecting tubing06	Albite
Above subject to same discount as "Supplies."			

all the lamps on the system can be turned out at once at the tank. Each and every lamp can be operated independently of the others; that is, any number of the lamps can be turned out or left to burn at the same time.

The two-, five-, and ten-gallon tanks hold one-half of the indicated capacity of gasoline; the balance of the tank is used for the air space. If you will furnish us with a diagram showing the height of the ceiling, distance between tank and first lamp, and the distance between each of the lamps, we will cut the tubing to the proper lengths, and make connections all complete, so that upon arrival of system, you can easily and quickly put it in place.

These lamps can also be operated with a gravity pressure tank, placed on the outside of the building or on the second or third floor of the building thereby doing away with the pump and gauge. Prices quoted on such systems upon application.



THE BEST LIGHT COMPANY, CANTON, OHIO, U. S. A.

THE "BEST" INVERTED SHADOWLESS LAMPS.

For Low Pressure Lighting System Only, and for INDOOR USE. Made of Brass, Oxidized.

A Very Durable Finish. 500 Candle Power Each.



No. 209.

Code—Eeru.

With No. 1408 Crystal
Globe.

Length, 25 inches.
Width, 5 inches.
Weight, 2 ½ lbs.



No. 207.

Code—Ectad.

With No. 1417 Etched
with Fringe Globe.

Length, 22 inches.
Width, 6 ½ inches.
Weight, 2 ½ lbs.



No. 206.

Code—Ectenic.

With No. 977 Frosted
Top Globe.

Length, 25 inches.
Width, 4 ½ inches.
Weight, 2 lbs.



No. 203.

Code—Ecto.

With No. 1088 Frosted
Top Globe.

Length, 24 inches.
Width, 5 inches.
Weight, 2 lbs.



No. 205.

Code—Ectopia.

With No. 1092 Frosted
Top Globe.

Length, 25 inches.
Width, 5 inches.
Weight, 2 lbs.

PLEASE ORDER BY NUMBER.

THE "BEST" INVERTED SHADOWLESS LAMPS.

For Low Pressure Lighting System Only, and for INDOOR Use.

Made of Brass, Oxidized Finish.



No. 211.

Code—Ecraseur.

1,000 Candle Power with No. 4458
Opal 15 inch Shade.

Length, 26 inches.
Width, 15 inches.
Weight, 3 1/2 lbs.



No. 210.

Code—Ecrevisse.

1,000 Candle Power with No.
10319 Opal or Clear 8
inch Globe.

Length, 30 inches.
Width, 8 inches.
Weight, 4 lbs.



No. 204.

Code—Ecstasy.

500 Candle Power with No. 1088
Frosted 5 inch Globe.

Length, 24 inches.
Width, 5 inches.
Weight, 2 1/2 lbs.

PLEASE ORDER BY NUMBER.

THE BEST LIGHT COMPANY, CANTON, OHIO, U. S. A.

The "Best" O-H Low Pressure Lighting System Lamps.

500 to 700 Candle Power Each.

All Finished in Oxidized Copper. The Best of Material Used Throughout.

No. 202 is for Out-Door Use.



No. 199.

Code—Eurche.

Length, 22 inches.

Width, 11 inches.

Weight, 2 $\frac{3}{4}$ lbs.



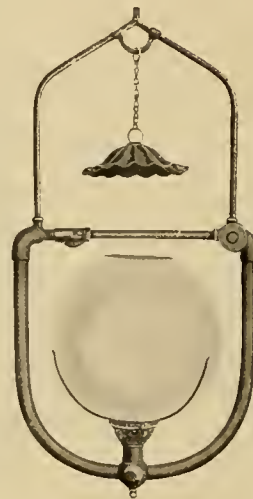
No. 200.

Code—Ecoassaire.

Length, 22 inches.

Width, 11 inches.

Weight, 3 $\frac{3}{4}$ lbs.



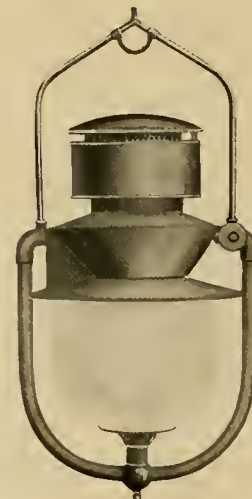
No. 201.

Code—Ecouete.

Length, 22 inches.

Width, 11 inches.

Weight, 3 $\frac{1}{2}$ lbs.



No. 202.

Code—Ecphora.

Length, 22 inches.

Width, 11 inches.

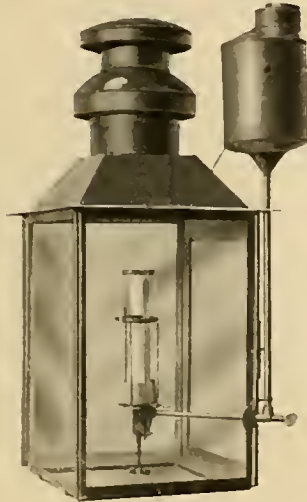
Weight, 4 $\frac{3}{4}$ lbs.

Easily installed and may be attached to any low pressure system.

PLEASE ORDER BY NUMBER.

Incandescent Lawn or Veranda Lamp.

100 Candle Power.



No. 76.

Height, 24 inches. Width, 12 inches.
Weight, 17 lbs.

Made out of the very best material and well painted inside and out. All parts strongly riveted, and ventilation is perfect. It is adapted for the Veranda, Lawn, Balconies, Pavillions, etc. Wrought Iron Bracket furnished with Lamp.

Incandescent Lawn or Veranda Lamp.

100 Candle Power.



No. 83.

Height, 24 inches. Width, 12 inches.
Weight, 17 lbs.

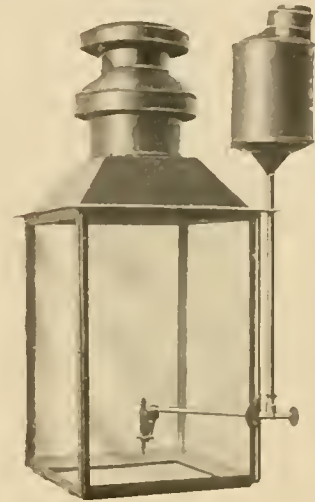
Made out of the very best material and well painted inside and out. All parts strongly riveted and ventilation is perfect. Is adapted for the Veranda, Lawn, Balconies, Pavillions, etc.

PLEASE ORDER BY NUMBER.

Lawn Lantern.

With "No Mantle" Gasoline Attachment.

16 Candle Power.



No. 107.

This style of light is intended for use in Factories, Mills, Shops, etc., or to fasten to the sides of buildings or verandas or on posts for lawns. It is supported by a Wrought Iron Bracket, which is furnished with every Lamp. The door opens downward.

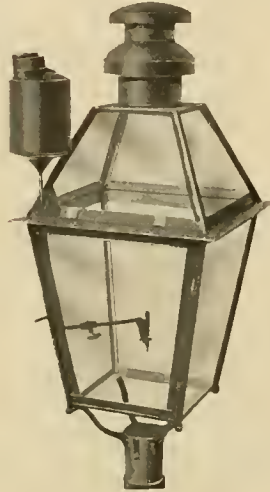
Height of Lamp, 25 inches. Width, 12 inches.
Size of Glass: Sides, 9x14; bottom, 8 1/2 x 8 1/2.

Weight, 17 lbs.

Light Your Streets.

With Our Famous

No. 101 "Best" Vapor Gas Street Lamps.



No. 101.

There are thousands of them in use, and the demand is constantly increasing. This is the most popular "No Mantle" Street Lamp on the market, and we highly recommend them.

15 inches wide; 3 feet high; contains 9 panes of glass; has malleable iron socket; is well painted inside and out. We guarantee them to be the best made, most durable, economical and safest on the market. No Mantle used. 16 candle power.

Weight, 16 lbs.



No. 120.

White Cedar Posts.

These two cuts illustrate our White Cedar Posts, which are 10 feet long, and vary from 7 to 10 inches across the base. They are painted black, and in appearance resemble Iron Lamp Posts. Cost much less than Iron Posts, and are just as durable. We also handle Iron Posts, and will quote prices upon request.

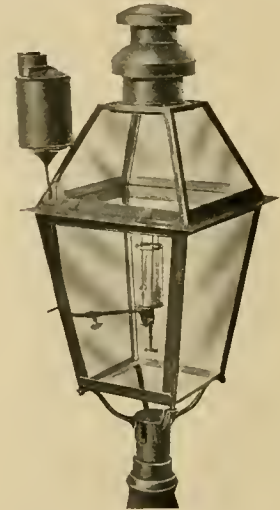
Weight of Wooden Posts, 40 to 50 lbs.



No. 121.

The "Best" Incandescent Street Lamp. A Truly Wonderful Invention.

We have achieved a wonderful victory over the proverbial "Dark Street and Dangerous Crossing" by adapting a 100 candle power Incandescent Gasoline burner to general street lighting purposes.



No. 48. Patented.

Light Your Streets with the "Best" Incandescent Street Lamps

and you will be troubled no more with smoke and dirt, but will have a clear, steady gas light of such dazzling brilliancy as to turn the gloom of midnight into the shades of a noonday sun.

This Lamp is so simple in construction that any one can operate it, and consumes so little gasoline that it is vastly cheaper than any other agency that has yet been applied to street lighting. Incandescent mantles and chimneys of any make can be used on these burners.

36 in. high, 15 in. wide; weight, 16 lbs.

PLEASE ORDER BY NUMBER.

Out-Door Arc Lamp.

For All Kinds of Out-Door Lighting. No Under Shadow. Easy to Light. Brilliant Light. Gravity Pressure. 100 Candle Power.

This Cut

Shows the "Best" Arc Suspended from one Pole with a Bracket. Light is raised and lowered like an Electric Arc.

Out-Door Arc Lamp.

For All Kinds of Out-Door Lighting. Storm and Insect Proof. Not Affected by Change of Temperature. No Undershadow.

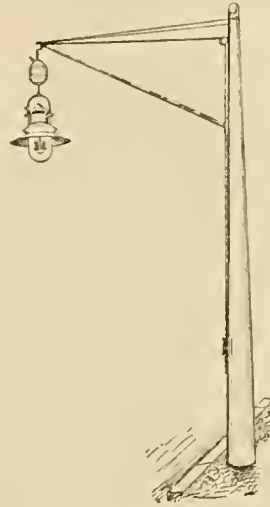
Consumes only 3 Pints of Gasoline in 15 Hours.



The Best, Most Durable and Only Perfect Gravity Gasoline Arc.

No. 58.—No Undershadow.

Made very strong throughout and nicely enameled. Will burn in coldest weather. Absolutely storm proof.
60 in. high, 24 in. wide, weight, 19 lbs.



The "BEST" Lamps are World Renowned for their Construction, Material Used, Finish and Results.

The "BEST" Light is THE Light of ALL Lights.

PLEASE ORDER BY NUMBER.

Consumes 3 Pints of Gasoline in 15 Hours.



Globe is very convenient, being hinged.

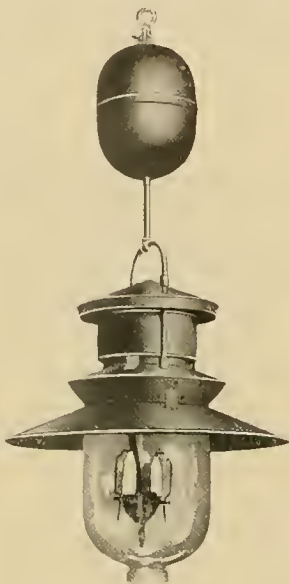
No. 84.

100 Candle Power.

40 inches high, 24 inches wide, weight 17 lbs.
Made of the very best material, nicely enameled and finished.
Gives brilliant light.

The "Best" Air Pressure Arc Lamp.

Steady Light—No Flickering.

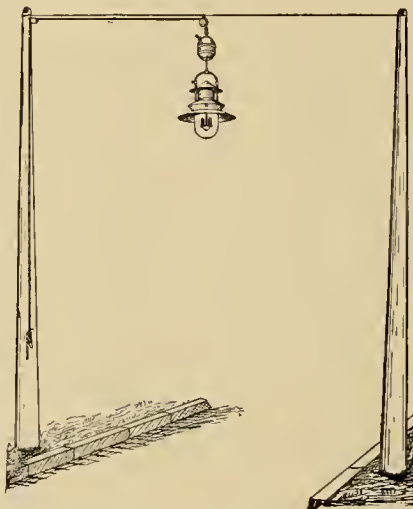
1,000 Candle Power. No Undershadow.
Length, 48 inches. Diameter of Reflector, 24 inches.

No. 82.—Weight, 21½ lbs.

This is a very POWERFUL Gasoline Lamp and is made of the very best material in a workmanlike manner. Ventilation perfect. Is wind and storm proof. Not affected by extremes of weather. Will burn anywhere. Globe is hinged. TWO STANDARD SIZE MANTLES used. No special mantle. This lamp is suspended from a building, post or cross wire, same as an Electric Arc. It is simple, effective and durable. Maximum light at minimum cost. Can be used for lighting streets, boulevards, parks, avenues, summer resorts, private grounds, store entrances, boat landings, band stands, show tents and grounds, etc., etc. Especially desirable for lighting railroad platforms and yards.

For all kinds of Out-Door Lighting.
Superior to Electricity.

This Cut.

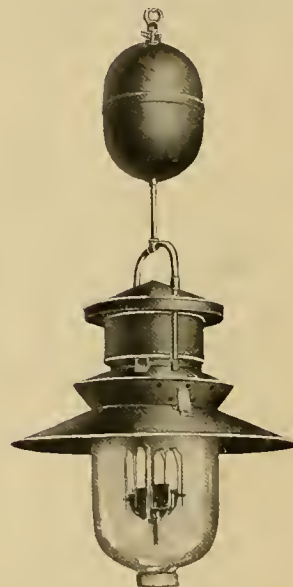
Shows how our "BEST" Arcs are suspended
between two Poles, like an Electric Arc.
The Same Outfit, such as Pulleys,
Cables and Poles, is used.

The "BEST" Arc System is Superior to All
Others. Maximum Light at Minimum Cost.
There are more "Best" Lamps in Use
than ALL other Makes Combined.

PLEASE ORDER BY NUMBER.

The "Best" Air Pressure Arc Lamp.

Steady Light—No Flickering.

2,000 Candle Power. No Undershadow.
Length, 48 inches. Diameter of Reflector, 24 inches.

No. 99.—Weight, 22 lbs.

This is the MOST POWERFUL Gasoline Lamp on the market, and is made of the very best material in a workmanlike manner. Ventilation perfect. Is wind and storm proof. Not affected by extremes of weather. Will burn anywhere. Globe is hinged. Four standard Size Mantles used. This Lamp is suspended from a building, post or cross wire, same as an Electric Arc. It is simple, effective, and durable. Maximum light at minimum cost. Can be used for lighting streets, boulevards, parks, avenues, summer resorts, private grounds, store entrances, boat landings, band stands, show tents and grounds, etc., etc. Especially desirable for lighting railroad platforms and yards.

For all kinds of Out-Door Lighting.
Superior to Electricity.

The "BEST"
In-Door Arc Lamp.

1,000 Candle Power.
No Undershadow.



No. 81.

Weight, 20 lbs. Length, 47 inches.

This is a Two-Mantle Air Pressure Arc Lamp designed for in-door use. Reservoir is made of No. 18 gauge sheet steel, ventilator and galvanized iron, aluminum finish. Light is steady and very brilliant. Just the Lamp for lighting LARGE STORES, Depots, Pavilions, Band Stands, Dancing Halls, etc., etc. It is very simple in construction. Anyone can operate it. Consumes two quarts in nine hours.

The "Best" Boulevard Lamp—100 Candle Power.

Removable Globe. All Parts Interchangeable.



No. 97.

45 in. high. 18 in. wide. Weight, 47 lbs.

Iron frame. Aluminum Finish, Copper Canopy, Opal Dome, Invisible Reservoir, Water Trap, all fittings in Brass, Bronze Generator. Finest Lamp on the market.

PLEASE ORDER BY NUMBER.

Will burn in Coldest Weather. Storm and Insect Proof.

The "BEST"
In-Door Arc Lamp.

2,000 Candle Power.
No Undershadow.

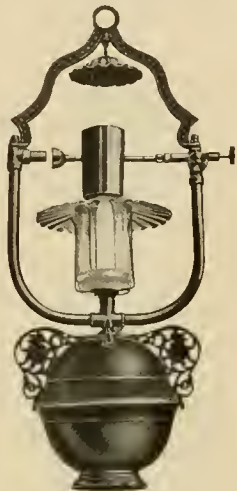


No. 98.

Weight, 20½ lbs.; 2½ gal. Reservoir; Length, 47 in.

This is a Four-Mantle Air Pressure Arc Lamp designed for in-door use. Reservoir is made of No. 18 gauge sheet steel, ventilator of galvanized iron, aluminum finish. Light is steady and very brilliant. Just the lamp for lighting Large Stores, Depots, Pavilions, Band Stands, Dancing Halls, etc., etc. It is very simple in construction. Anyone can operate it. Consumes twoquarts in five hours.

The "BEST"
In-door Arc Light.
600 Candle Power.



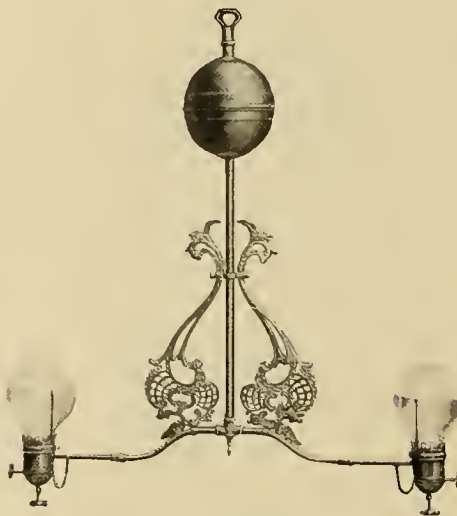
No. 94.—Code word, Egypt.

Weight, 8 lbs. Length, 30 in.

This is a One-Mantle Air Pressure Arc Lamp that you can hang or set anywhere. The light is equal to an electric arc and is absolutely steady, free from odor and smoke. It is made of the best material by skilled workmen and up-to-date machinery. Nicely finished in Oxidized Copper, highly polished. Every Lamp is thoroughly tested for strength of material and candle power. Best made, finished, simplest and most durable on the market. "Best" Lamps are in a class distinctly their own. Superior to all others.

This cut shows Lamp No. 145, with a LOW GALLERY, and Globe No. 594.

NO CHIMNEY OR
SHADE REQUIRED

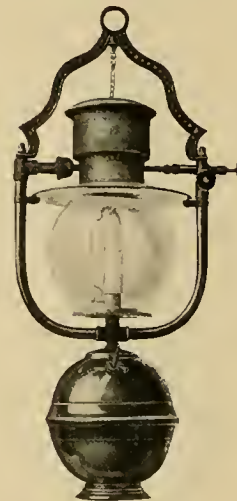


No. 145.

All kinds of Gas Globes can be used on this LOW GALLERY, and it can be used on all of our Underneath Generator Burner Lamps, illustrated on pages 4 to 18.

PLEASE ORDER BY NUMBER.

The "BEST"
Out-Door Arc Light.
600 Candle Power.



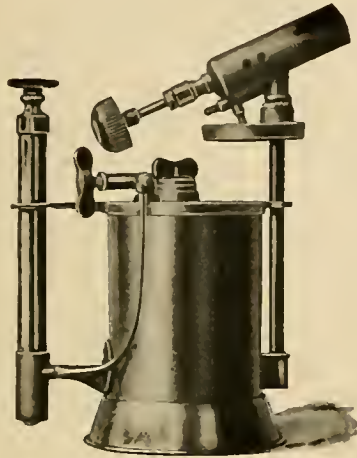
No. 95.—Code word, England.

Weight, 10 lbs. Length, 30 in.

This is a One-Mantle Air Pressure Arc Lamp designed for out-door use. You can hang or set it anywhere. Will burn in any kind of weather. Not affected by extremes of temperature. Wind proof, is made of the best material, nicely finished, and the burner is simplicity itself. Anyone can operate it successfully. Consumes two quarts of gasoline in eight hours, giving a 600 candle power light. Every lamp guaranteed.

The "BEST"

Gasoline Blow-Pipe Torch.



No. 150.

11 in. high, 9 in. wide, weight, 3¾ lbs.

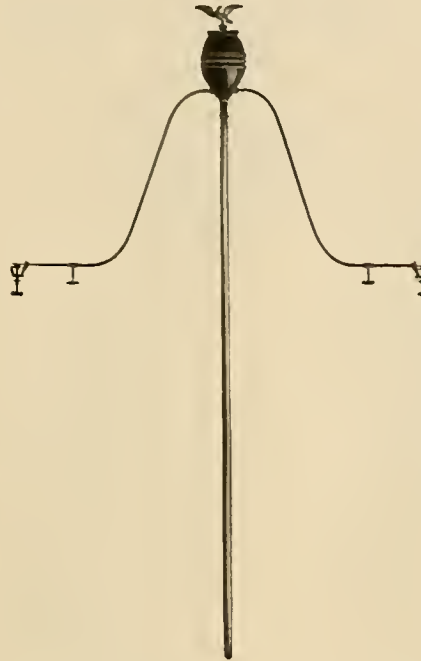
The best Torch for Lighting Street Lamps, softening paint on cars, coaches, carriages, houses, signs, furniture, etc.

Also for tempering drills light brazing, thawing out frozen water pipes, plumbing, gas fitting, and for every purpose where a hot, smokeless flame is needed.

Every part can be easily reached for repairs or cleaning. The air supply has two valves, preventing either gasoline or vapor, by any possibility, from getting into the pump. The burner also has two valves, and no leakage can occur. The very best thing ever made for its purpose.

Made Entirely of Brass and Warranted.

The "Best" Band Torch.



No. 116.

Solid Brass Eagle, Polished and Lacquered. Reservoir and Pipes nicely Enameled.

The above cut illustrates our Band Torch, which will furnish illumination sufficient for twenty musicians to read their notes. We guarantee it to be the best, most durable and finest Band Torch on the market. Spread, from burner to burner, 5 feet. Weight, 6½ lbs.

PLEASE ORDER BY NUMBER.

The "BEST"

Soldering Furnace.

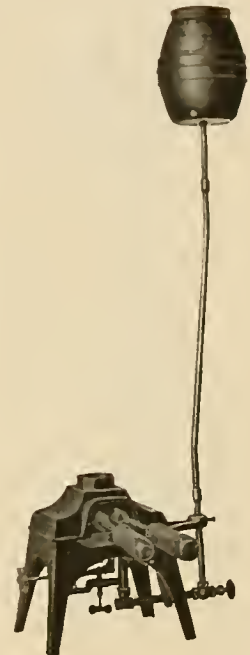
No. 155.

Consumes only one gallon of Gasoline in ten hours.

Makes less noise than any other Furnace. If the Furnace is not satisfactory, return it within ten days and your money will be refunded.

We have sold thousands on the above terms and not one has been returned.

42 in. high, 14 in. wide, weight 20½ lbs.



The "BEST"

Spray Wall Lamp

For Foundries, Machine Shops, Street Salesmen, Peanut Stands, Fish Wagons, Round Houses and Blacksmith Shops, indispensable to the Tinner and Plumber. No mantle used.



No. 156.

Length, 22 in. Width, 7 in. Weight, 1½ lbs.
A good Portable Light for In-door and Out-door use. Gives 10 Jets of pure White Light. Reservoir holds 1 qt., and will burn 6 hours.

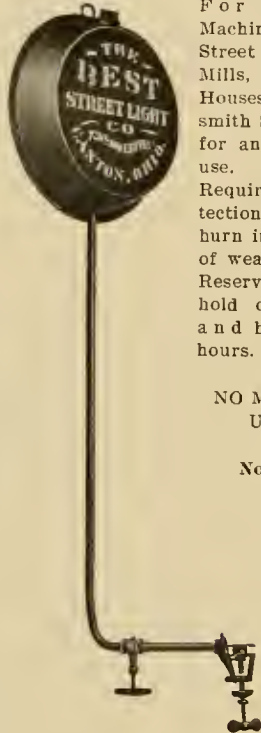
The "BEST"

Out-Door Torch

For Foundries, Machine Shops, Street Salesmen, Mills, Round Houses, Blacksmith Shops, and for any out-door use. Requires no protection and will burn in any kind of weather. Reservoir will hold one gallon and burn Eight hours.

NO MANTLE USED.

No. 154.



Length, 36 in. Width, 12 in.
Weight, 3½ lbs.

Jumbo Out-Door Torch.

For Same Use as No. 154.

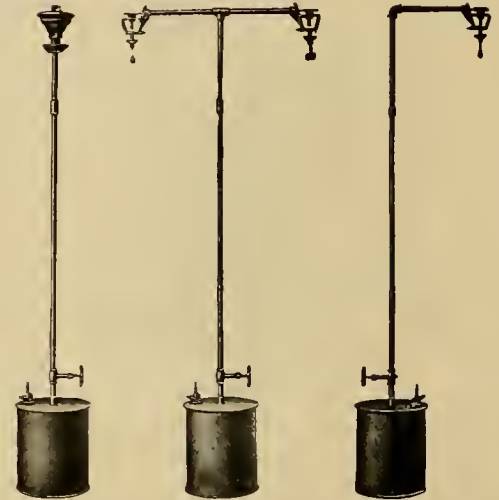


No. 100.

Length, 3½ feet. Width, 12½ in.
Weight, 5 lbs.

Street Salesman's Torch.

Air Pressure Tanks.
One Gallon Capacity.



No. 115.

No. 114.

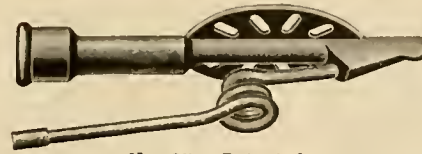
No. 113.

Standard Height, 6 feet.
Any length Pipe to order.

Pressure kept up with Air Bulb or Pump.

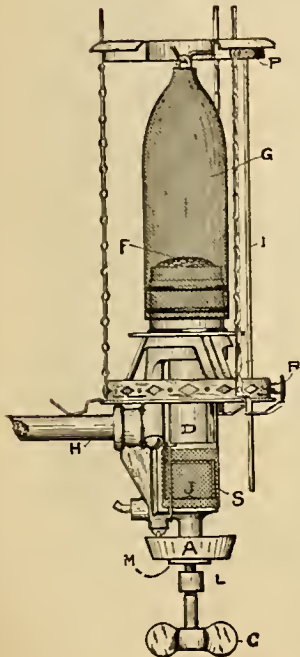
PLEASE ORDER BY NUMBER.

The "BEST"
Vapor Gas Burners.

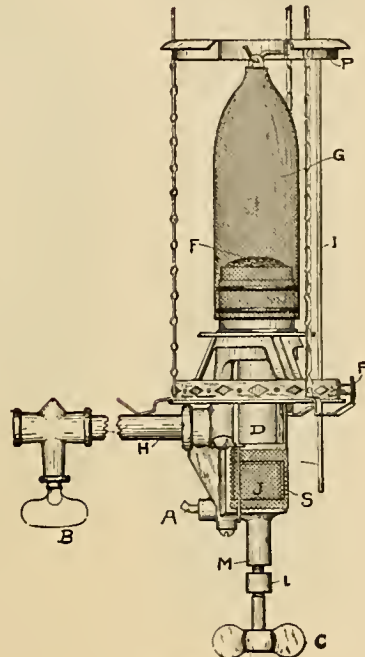


No. 85. Patented.

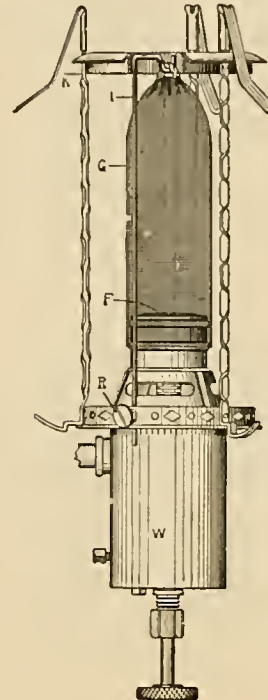
The "BEST"
Vapor Gas Burners.



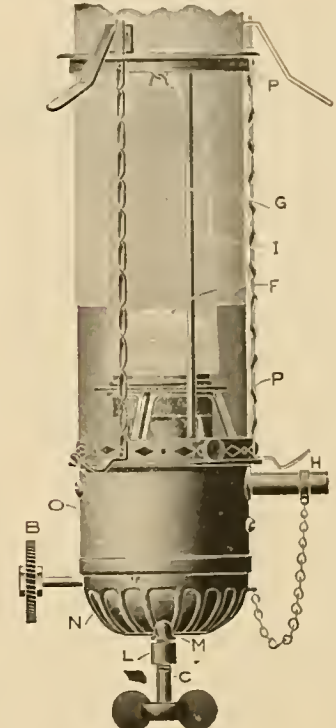
No. 60. Patented.



No. 60B. Patented.



No. 96. Patented.



No. 59. Patented.

**Patent
Automatic Spring Extension**

Specially Adapted for
The "BEST" Incandescent Vapor Gas
Lamp.



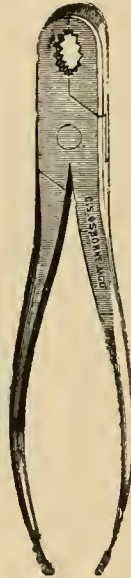
- No. 49.—Brass.
- No. 72.—Oxidized Copper.
- No. 73.—Nickel Plated.

Weight, 2 1/4 lbs.

Length, not extended, 10 inches;
length, extended, 46 inches. Adapted
for weights of from 10 to 16 pounds.

With this extension, lamps can be
lowered and raised easily and quickly
for filling and lighting.

**Six Inch
Gas Burner Pliers.**



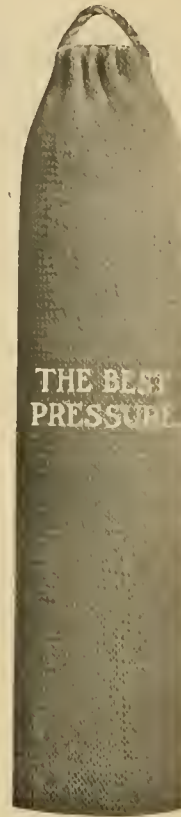
No. 51.

Having many calls for a GOOD
Plier, we have had these made of
CAST STEEL especially for our
trade. Very convenient for tak-
ing apart or putting together
Lamps, Fixtures, etc.

PLEASE ORDER BY NUMBER.

**The "BEST"
Mantles.**

Best Quality.



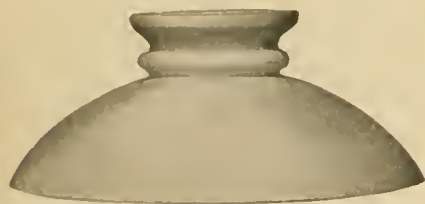
5 inches long.
Used on Nos. 94, 95,
159, and 160
Arc Lamps.



3 1/2 inches long.
Used on Nos. 81,
82, 98, 99 and
160 Arc Lamps.



3 1/2 inches long.
Used on all Gravity
Pressure Lamps.



Dome Shade in Opal; also in Green.



No. 6696 White Acid, Plain Top,
Crystal, 5 in. diameter, 6 in. high.



No. 5977 Silver Etched, Scalloped
Top, Crystal, 6 in. diameter,
7 1/2 in. high.



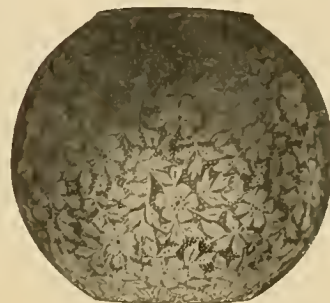
No. 6336 Etched, Scalloped
Top, Crystal, 4 1/2 in. di-
ameter, 7 in. high.



Bobeche or Eye Shade in Opal; also in Green.



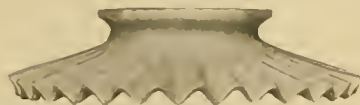
No. 6709 Ribbed Plain Top, Opal,
5 in. diameter, 6 in. high.



No. 6703 Etched Crystal,
6 in. diameter.



No. 6246 Etched, Plain Top,
Crystal, 6 1/2 in. diameter.



Crimped Opal Shade.

These Globes can be used on Regular Gas Fixtures as well as on our Vapor Gas Lamps.

SKEPTICAL?

Read What Others Say of The "Best" Light.

These UNSOLICITED testimonials are only A FEW of THOUSANDS on file in our offices. We receive them DAILY, not only from all over the United States, but from all over the world.

GASOLINE vs. KEROSENE.

My Gasoline Lamp which I now use I would not give for a house of "Angle" or any other kerosene lamp.
Milton, N. J. JAMES H. CURRIN.

LAMPS ARE MARVELOUS.

Your lamps are certainly wonderful, marvelous and beautiful.
Nelsonville, O. THOS. R. ROSSER.

FROM FATHER FORTIER.

After using one of your lamps for years I was well satisfied and desire another one. Having changed my station, I sold the lamp when leaving Ontario, California, and I daily miss it considerably.
Banning (Riverside Co.), Cal. FATHER FORTIER.

BRIGHT AS DAY.

I have received my lamp and have it in operation. It is just what you recommended it to be. "The Best." I will order some more soon. It makes our store bright as day.
Browntown, Va. L. E. BAUBLITZ.

"BEST EVER."

Some time ago I bought one of your new lamps, the overhead generator kind that you light with a match, and will say that it is by far the best gasoline lamp I ever saw. We only burn one quart of gasoline in four nights, and it lights just as easy as an oil lamp, and is ten times easier taken care of.
Montague, Mich. A. F. CASSELMAN & CO.

THE "BEST" 95c vs. ELECTRIC LIGHT \$6.13.

My No. 36 student Lamp has stood good, hard service for half a year now, and am glad to say that it has brought our electric light bills down from \$6.13 per month to 95 cents per month, a saving of about \$5.00 a month. The lamp has easily paid for itself, and we all like it very much.
Wyoming, O. H. C. WALDO.

IN USE THREE YEARS.

I have not purchased yet, but when I get ready to buy will send you an order. I purchased from you about three years ago a No. 94 air pressure lamp and am entirely satisfied with the same, so when I wish a lamp, will purchase it from you.
Buck Creek, Ind. O. E. CREDON.

LAMPS ARE ARTISTIC.

Lamp No. 86 came duly to hand. It pleases me very much. It gives a good light, and it is artistically gotten up.
Orange, N. J. RUSSEL C. SMITH.

BEATS THEM ALL.

I have used one of your hundred candle power lamps for one year now and wish to state that it beats any light I have ever tried. I have never had to fix any part of it since I got it, and it has paid for itself easily—besides being the finest light to read by that I have ever used.
Victoria, B. C., Canada. EDWARD DAVIS.

LIGHT AS DAYTIME.

I received the student lamp to-day which I ordered a few weeks ago. It arrived in good condition. It is indeed "The Best" light for students that I ever saw. I am writing this letter by it to-night and it is as light as daytime. I am very much pleased with my investment.
Centralia, Mo. G. WALTER RIDGEWAY.

NO USE FOR GLASSES.

I received the lamp all O. K. and it is a dandy. The night we set it up, Mother and Father were scared to death, but since they got over their scare they think it is all right. Father is an old man, 65 years of age, and he has worn glasses for 12 years. After the lamp was lighted Father could pick up the paper and read anywhere in same without his glasses.
Venedocia, Ohio. W. D. IRELAND.

JUST LIKE DAY.

The lamp came all O. K. in good time. It is all you claim and more. The first night we burned it two birds came bumping and fluttering against the window and when we opened the door, one of them actually came in the house, evidently thinking it was daylight.
Bald Mount, Pa. GEORGE M. SHELLEY.

WORTH TWO OR THREE OTHER GAS LIGHTS.

I have received your catalogues and also letters. I have seen some "Best" lights and the owners said they were worth two or three other gas lights. I intend to buy later.
Elkhart, Ind. ROSS NEU.

BURNS ONE PINT OF GASOLINE IN ONE WEEK.

The order for student lamp No. 36, which you received from me and filed Nov. 16, 1905, arrived all safe and sound; everything belonging to same was packed in and complete. I have used this lamp just one week and have not used a pint of gasoline yet, at the rate of two hours each night. I find it all you claim, and had no trouble in setting it together. I must say that it is the best light I ever saw.
Ontario, Cal. JOSHUA SELLMEN.

No. 82 GIVES MORE LIGHT THAN TWO ELECTRIC ARCS.

The lamps I bought of you some time ago are giving excellent satisfaction. We have 21 of your No. 82 arc lamps and every one works like a charm. They do more than you claim for them. One of your street lamps actually gives more light than two electric arcs do. The Pennsylvania R. R. Co. has purchased two of them to light the yards at night. Your lamps are as far ahead of the cheap imitations as the sun is of a candle. As for your indoor lamps, I will say that they are fast putting the old coal oil lamps out of business.
New Holland, O. J. W. HOLAHAN.

BEST LIGHT WE EVER HAD.

Since April 4, 1906, we have been using your low pressure lighting system bought of you through C. B. Pennock & Co., of Coldwater, Michigan, with whom I have been connected for the last eight years. We are at present located just one-fourth of a mile outside the city on a beautiful farm which we have recently purchased. After having become accustomed to electric lights and gas lights we did not like the idea of going back to kerosene lights again, consequently we purchased your system. We consider it the best light we have ever used.
Coldwater, Mich. BONCHER & STRONG.

SATISFACTORY.

Through me, some years ago, the town of Bridgeport, N. J., purchased some 50 of your street lamps, and they have been burning ever since and giving satisfaction of a high degree. I may be able to sell 20 or 25 of the same kind to the town of Gibbs-town, N. J.
Bridgeport, N. J. JOHN S. TRUITT.

YOUR LAMP IS A "DANDY."

On Jan. 1, 1906, I received one of your No. 89 pendant overhead generator gas lamps and I have burned it 64 nights at a cost of 72 cents for gasoline—lighting a room 16x22 feet, in any part of which we could read the finest print. Your lamp is a "Dandy," the best and the cheapest now on the market.
New Sharon, Iowa. GEORGE B. GOULD.

IN USE OVER EIGHT YEARS.

Please give me price on your double burner gasoline lamps. I have had one of your single burner gasoline lamps in use for **over eight years** and still giving **satisfaction**. I want to get a double burner for a neighbor. JAMES W. KERR.
Gore Bay, Ont., Can.

"JUST FINE."

I write to ask what you will furnish me one of your lamps for like the one I have marked on the enclosed cut, No. 88. We have a single lamp like 91, that we got for you about **four years ago**, which we think is just fine. MRS. R. D. LEMON.
Washington, Iowa.

WOULD NOT TAKE \$25.00 FOR IT.

The student lamp which I received some time ago is giving the **best** satisfaction of any lamp I ever saw. I would not take \$25.00 for it if I could not get another. The light is so white and soft that it is an easy matter to read fine print ten feet away from it. I have been waiting this long to give it a fair trial. W. D. CRADDOCK.
Wentworth, N. C.

PRETTIEST THING OF ITS KIND IN THE WORLD.

I have received No. 53 stand lamp which I ordered and think it is grand. My friends say it is the prettiest thing of its kind in the world. I have also tested it and found it O. K. in **every respect**. Cherry Valley, Ark. A. J. STOFFORD.

YOUR LAMP IS A WONDER.

I received light No. 122 O. K. and in **10 minutes** after getting it out of the box I had it making a **fine light**. It is a wonder. I am sure it goes far ahead of any other light I have ever seen, and I have lived in different cities having electricity and natural and artificial gas. Everybody who sees it, calls it a wonder. D. H. ANDERSON.
Buffalo Roads, Pa.

NOT A MINUTE'S TROUBLE IN THREE YEARS.

I have used two of your overhead generator pendants for over three years and they never caused a minute's trouble. Delphi, Ind. CURTIS V. HATFIELD.

FAR SUPERIOR TO WELSBACH.

The No. 2 wall lamp which I purchased of you arrived in good order on the 11th inst., and have had it in operation ever since. It is the **most satisfactory gasoline light I have used or seen**, and is far superior to the M. & M. or Welsbach in simplicity and brilliancy. Every one who has seen it, is surprised at the light it gives. I would like to have the agency for the "Best" light for this town, as I think I can sell quite a number of your lights here. OBERLIN LOOS.
Deer Harbor, Wash.

FAR AHEAD OF ELECTRIC LIGHTS.

Some few days ago I received the lights shipped me, all O. K. I got them in working order shortly after and find them just the light one wants. To say that I am well pleased with our lights does not express it in the least. I of course expected to find a pretty good light, but did not for a moment expect, or even believe, that they would be anything like I have been used to (electric lights). But, honestly, they are **far ahead** of electric lights; give a much better light. Why, one of your single lights gives me better light than I have been getting from three 16 candle power electric burners. My electric light bill averages \$30.00 per year. One year electric light bill will fit one out with plenty of lights of yours and run them a whole year. Harbor Beach, Mich. W. E. RICE.

MANTLES ARE DURABLE

Your letter enclosing a wire screen and a cap for lamp No. 125 was received. I am using the cap and screen and the lamp is working O. K. I have no objection to the lamp and it has certainly given **full satisfaction**. I used the mantle that came with the lamp **over one year** and the lamp was in use during that time on an average of two hours per night. S. U. PETIT, Supt. Almont Union School. Almont, Mich.

BETTER THAN ELECTRICITY AND CHEAPER THAN OIL.

I received lamp No. 125 in good condition and would say it works **perfectly**. It is without exception the **best light I ever saw**; beats electricity all to pieces and it is so cheap to operate, while gasoline is 30 cents a gallon here and yet it is a lot **cheaper than coal oil**. I started it on 25 cents worth of gasoline and burned it every night except one since and it is not used up yet, and that is nearly **eight weeks ago**. Before burning the "Best" light I burnt in a circular burner coal-oil lamp a gallon at 18 cents every week, so there is a gain by using the "Best Light," first, on my eyesight; and second, on any one's pocket. I believe a lot of my eye trouble is caused by reading by poor light. I know my eyes ached before I got this light, but now it turns **darkness into day**, as you said it would. The light is **better than I thought it would be**. Plcton, Ont., Can. FRED A. HUBBS.

RECOMMEND IT TO ALL.

The one light fancy pendant underneath generator lamp purchased of you last December has given the best of satisfaction. Several persons upon seeing the light for the first time have exclaimed, "I didn't know you had a gas well." If we neglect to keep a supply of gasoline on hand, and have to use our Kerosene lamps for one or two evenings, it seems as though we have **no light at all**. We most heartily recommend "The Best" light to anyone wishing a cheap, beautiful, brilliant, white light. Berea, O. R. J. GOSS.

MORE THAN SATISFACTORY.

The lamps have proven more than satisfactory, and I want to secure the agency for them in the counties of Buckingham and Fluvanna. I have associated with me in this agency one of the most progressive merchants of Arvonla and we mean to push the sale of these lamps if you will allow us the above mentioned territory. T. M. JONES.
Arvonla, Va.

AS GOOD AS NEW.

I have used one of your lamps two years and it gives me as good a light as it did when new. Windsor, Ill. J. J. CHAMBERS.

FROM AUSTRALIA.

The lamp came to hand safe and in good order. I am **more** than satisfied with it, as it does **more** than you claim for it, and I think it will lead to some orders from the neighborhood, as it has been greatly admired by a lot of my friends. Beechworth, Australia. C. E. KIPLING.

SILVER MEDAL.

We are glad to inform you that we had kept your lamps in the Industrial and Agricultural Exhibition at Amraoti Bazar, and we got Silver Medal for your lamps. THE GLOBE STORES CO.
Bombay, India.

INDIA.

There are already two dozen lights manufactured by your firm, lit up by petrol, in use in my office. I intend to extend their use to the offices and some private buildings. I ask you to be kind enough to send me your complete catalog with quotations as early as possible, that I may give you an order without unnecessary delay. His Highness Raja Vira Basava Chikka Royal Y. B. Zemindar of Punganur, Madras Presidency, India. Punganur, Madras Presidency, India.

INDIA.

We are in receipt of yours of the 20th ultimo, and in reply we beg to state that all your goods arrived safely, with the exception of two globes which broke on the way. We tried the lamps and are glad to say that we are **more than pleased with the light**. MOSES SOMAKE & CO.
Karachi, India.

FROM NEW ZELAND.

I have much pleasure after using two of your No. 6 "Best" Light lamps for **over two years** in my house in Palmerston North, near Wellington, N. Z., which I bought through your agents in Auckland, in sending you this testimonial, the lamps are as good as the day I bought them. I am in the engineering line and can say that they are without a doubt a **perfect light**. ALBERT RICKARD.
Palmerston, New Zeland.



Church in Auckland, New Zealand, lighted with our No. 55 Chandeliers.



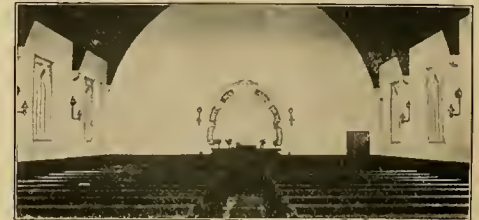
Our No. 82 Arc in Street of San Juan, Porto Rico.



Street of Barranquilla, Colombia, lighted with our No. 48 Lamps.



Chinese Store, lighted with a "Best" Lighting System.



Church near Southampton, England, lighted with our No. 2 Wall Lamps.



Five of these photos are from India and one from China.



All of the above Temples and Pagodas are lighted with THE "BEST" LIGHT.



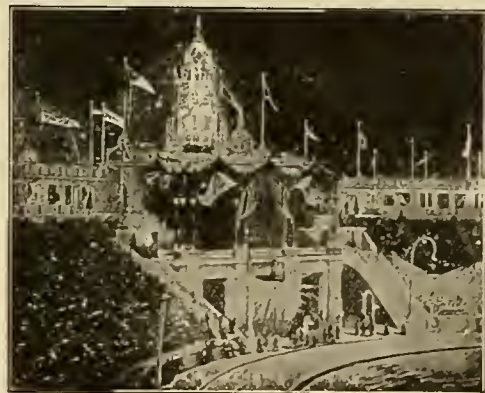
Four photos from India. Every one of these buildings lighted with **THE FAMOUS "BEST" LIGHT.**



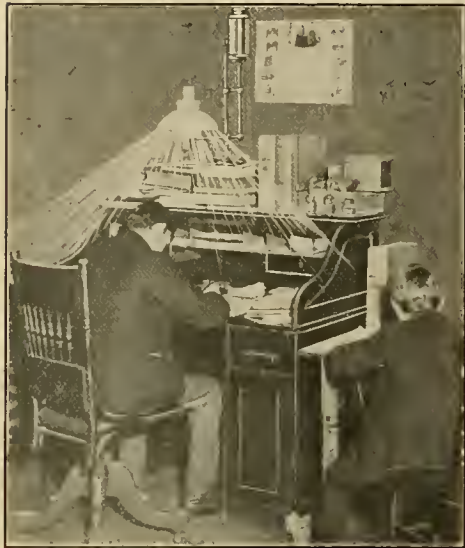
Three of these photos show our No. 84 Arc Lamp lighting a Street, Store Entrance and Entrance to a Summer Hotel.



Two of these photos show our No. 82 Arc Lamp lighting a Large Arena and a Wharf.



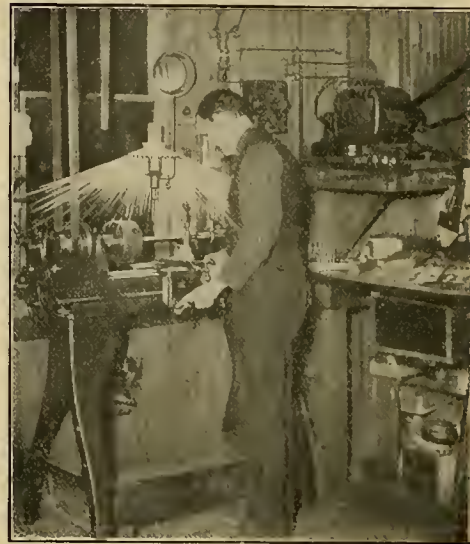
Our Stand Lamps are very convenient for Desk Work; also for Reading and Sewing. Buy "The Best."



With "The Best" Light, reading is a pleasure! No glasses necessary. The light is mellow, pure white, and ten times stronger than an oil light.



Our Wall Lamps are unequalled for Workshop or Factory. Hang them anywhere. Superior to Electric Light, and cheaper.



By using a Kerosene Oil Lamp you will ruin your eyes—Save your eyes by using "The Best" Light. The best and cheapest.





